



OVER 60?

Secure this property
for up to **59% less!**

Price

£210,000

Freehold

2x  1x  2x 

**Canterbury Street,
Gillingham, Kent, ME7**

Wards
Helping you move forwards



Main features

- Victorian terraced house: ideal first time buy
- Gas central heating and mostly double glazed
- Useful cellar
- Upstairs bathroom
- Walking distance of Gillingham High Street & Main Line Station

Accommodation

GROUND FLOOR

Lounge: 13'0 x 12'2 (3.97m x 3.71m)

Dining Room: 13'1 x 10'4 (3.99m x 3.15m)

Kitchen: 9'6 x 7'5 (2.90m x 2.26m)

BASEMENT

Cellar: 13'1 x 11'6 (3.99m x 3.51m)

FIRST FLOOR

Landing

Bedroom 1: 13'4 x 10'1 (4.07m x 3.08m)

Bedroom 2: 10'6 x 10'3 (3.20m x 3.13m)

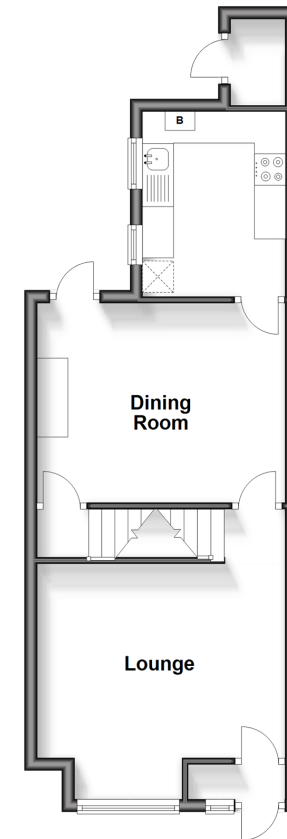
Bathroom

OUTSIDE

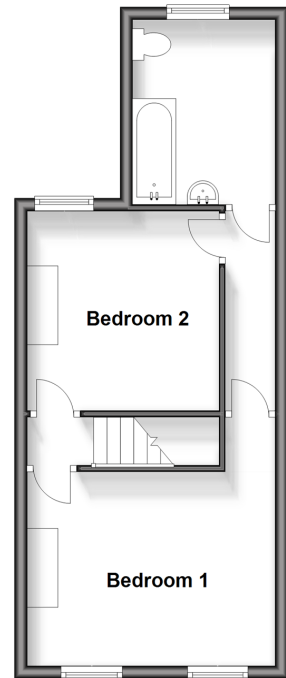
Front Garden

Rear Garden

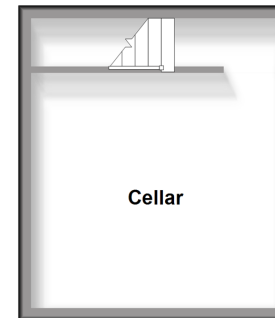
Ground Floor
Approx. 39.4 sq. metres (424.2 sq. feet)



First Floor
Approx. 35.9 sq. metres (386.4 sq. feet)



Basement
Approx. 18.4 sq. metres (198.2 sq. feet)



Call Gillingham - 01634 851191 ■ wardsof Kent.co.uk

- Legal advice should be taken to verify fixtures/fittings, planning, alterations and/or lease details
- Appliances & services are untested, dimensions are approximate and floor plans are not to scale
- Through a Homewise Home For Life Plan people aged 60+ can secure this property for up to 59% less, by purchasing a Lifetime Lease.



11024734/20231113/PR/GS