



**Price**  
**£390,000**

**Freehold**

3x  1x  1x 

**Glen View, Gravesend,  
Kent, DA12**

**OVER 60?**

Secure this property  
for up to **59% less!**

*Wards*  
Helping you move forwards





## Main features

- 3 double bedrooms
- Garage en bloc
- Spacious light and airy open plan lounge
- Large conservatory area
- Popular Windmill Hill location with views of the River Thames

## Accommodation

### GROUND FLOOR

Entrance Porch  
Entrance Hall  
Cloakroom  
Kitchen : 11'9 x 9'1 (3.58m x 2.77m)  
Lounge : 16'0 x 15'5 (4.88m x 4.70m)  
Conservatory Area: 14'8 x 10'1 (4.47m x 3.08m)

### FIRST FLOOR

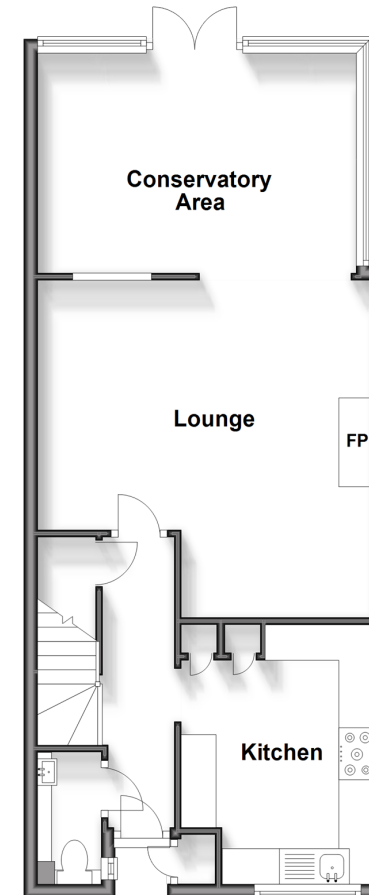
Landing  
Bedroom 1: 13'7 x 9'3 (4.14m x 2.82m)  
Bedroom 2: 12'1 x 8'7 (3.69m x 2.62m)  
Bedroom 3: 11'9 x 6'4 (3.58m x 1.93m)  
Bathroom

### OUTSIDE

Front Garden  
Rear Garden  
Garage En Bloc

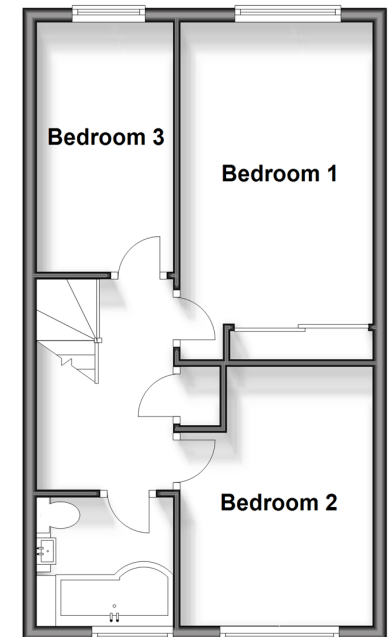
### Ground Floor

Approx. 54.5 sq. metres (586.2 sq. feet)



### First Floor

Approx. 40.8 sq. metres (439.5 sq. feet)



**Call Gravesend - 01474 352417 ■ [wardsof Kent.co.uk](http://wardsof Kent.co.uk)**

- Legal advice should be taken to verify fixtures/fittings, planning, alterations and/or lease details
- Appliances & services are untested, dimensions are approximate and floor plans are not to scale
- Through a Homewise Home For Life Plan people aged 60+ can secure this property for up to 59% less, by purchasing a Lifetime Lease.