



Price
£575,000

Freehold

4x  2x  2x 

**The Turnstones,
Gravesend, Kent, DA12**

OVER 60?

You could get up to
59% off the price!*



Video Tour available

Wards
Helping you move forwards



Main features

- **Fantastic family home on a modern development**
- **Situated in a cul-de-sac**
- **En-suite shower room and family bathroom**
- **Handy study and downstairs cloakroom**
- **Close by to shops, schools as well as a residential park area**

Accommodation

GROUND FLOOR

Entrance Hall

Lounge : 16'10 x 12'10 (5.13m x 3.91m)

Dining Room : 10'9 x 8'10 (3.28m x 2.69m)

Kitchen : 12'6 x 9'2 (3.81m x 2.80m)

Study: 7'8 x 6'0 (2.34m x 1.83m)

Cloakroom

FIRST FLOOR

Landing

Bedroom 1: 12'9 x 11'9 up to fitted wardrobes (3.89m x 3.58m)

En-Suite Shower Room

Bedroom 2: 12'0 x 6'7 (3.66m x 2.01m)

Bedroom 3: 11'6 x 8'11 (3.51m x 2.72m)

Bedroom 4: 9'9 x 7'8 (2.97m x 2.34m)

Bathroom

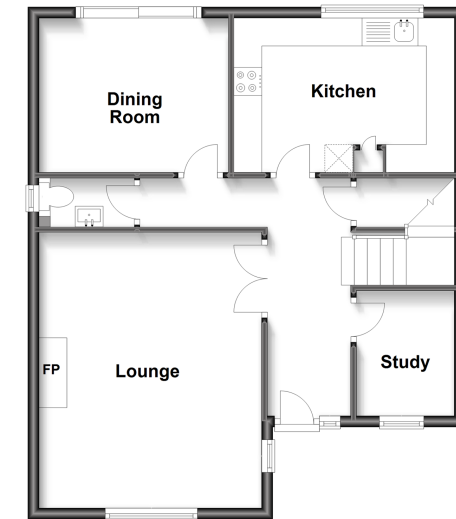
OUTSIDE

Front and Rear Gardens

Garage and Driveway

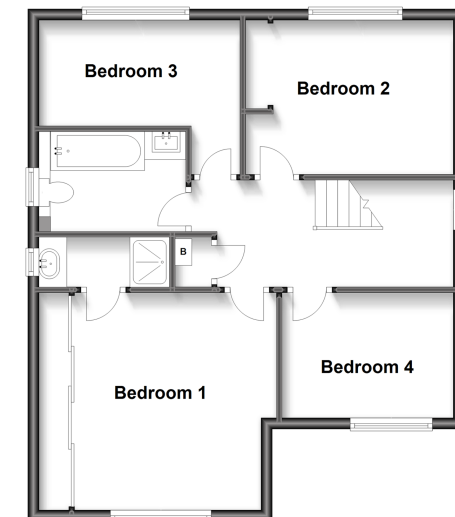
Ground Floor

Approx. 59.4 sq. metres (639.9 sq. feet)



First Floor

Approx. 59.4 sq. metres (639.9 sq. feet)



Call Gravesend - 01474 352417 ■ wardsof Kent.co.uk

- Legal advice should be taken to verify fixtures/fittings, planning, alterations and/or lease details
- Appliances & services are untested, dimensions are approximate and floor plans are not to scale
- Our Homewise partnership offer a 'Home for Life' plan to buyers over 60, granting a lifetime lease for your protection and reducing the purchase price by up to 59%



11134317/20220910/NO/NO