



**OVER 60?**

Secure this property  
for up to **59% less!**

**Price**

**£290,000**

**Freehold**

2x  1x  2x 

**Seymour Road,  
Northfleet, Gravesend,  
Kent, DA11**

*Wards*  
Helping you move forwards





## Main features

- Ideal home for first time buyers
- Spacious open plan family room
- Upstairs bathroom
- Within walking distance of shops and excellent schools
- Kitchen extended to provide a dining area

## Accommodation

### GROUND FLOOR

Family Room : 23'10 into bay x 13'0  
(7.27m x 3.97m)

Kitchen : 10'4 x 7'2 (3.15m x 2.19m)

Dining Area : 8'6 x 7'2 (2.59m x 2.19m)

### SPLIT LEVEL FIRST FLOOR

Landing

Bedroom 1: 13'1 x 9'9 (3.99m x 2.97m)

Bedroom 2: 10'1 x 10'1 (3.08m x 3.08m)

Bathroom : 10'4 x 7'2 (3.15m x 2.19m)

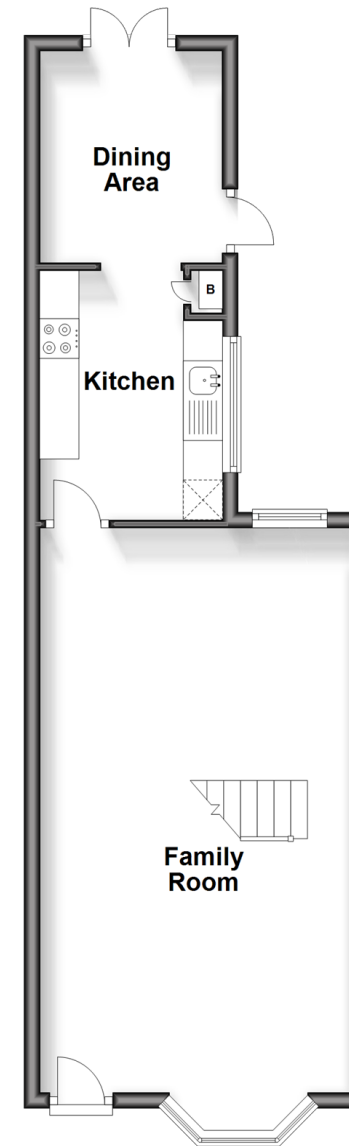
### OUTSIDE

Front Garden

Rear Garden

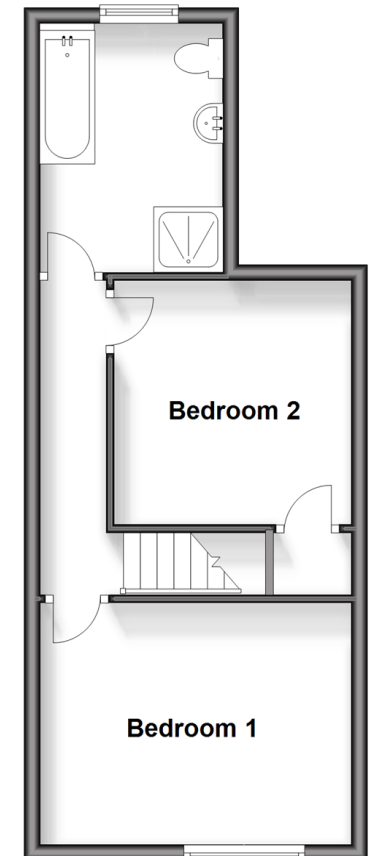
### Ground Floor

Approx. 42.2 sq. metres (454.4 sq. feet)



### Split Level First Floor

Approx. 35.6 sq. metres (383.1 sq. feet)



**Call Gravesend - 01474 352417 ■ [wardsof Kent.co.uk](http://wardsof Kent.co.uk)**

- Legal advice should be taken to verify fixtures/fittings, planning, alterations and/or lease details
- Appliances & services are untested, dimensions are approximate and floor plans are not to scale
- Through a Homewise Home For Life Plan people aged 60+ can secure this property for up to 59% less, by purchasing a Lifetime Lease.



11138333/20240406/MM/NO