



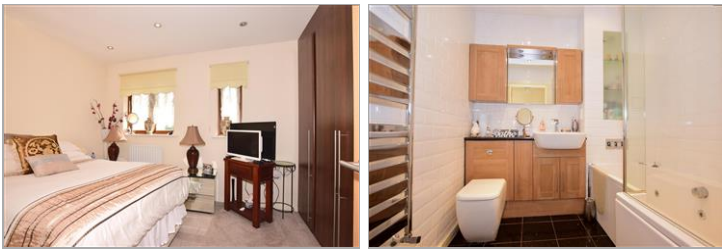
Price
£285,000

Freehold

2x  1x  1x 

**Montgomery Close,
Gravesend, Kent, DA12**

Wards
Helping you move forwards



Main features

- Spacious 2 bed terraced house perfect for first time buyers
- Good sized lounge/diner
- Downstairs cloakroom
- Allocated parking space at the front
- Offered for sale with no forward chain

Accommodation

GROUND FLOOR

Entrance Hall

Lounge/Diner: 15'10 x 13'9
(4.83m x 4.19m)

Kitchen: 10'5 x 5'11 (3.18m x 1.80m)

Cloakroom

FIRST FLOOR

Landing

Bedroom 1: 11'0 x 8'10 (3.36m x 2.69m)

Bedroom 2: 13'8 x 8'7 (4.17m x 2.62m)

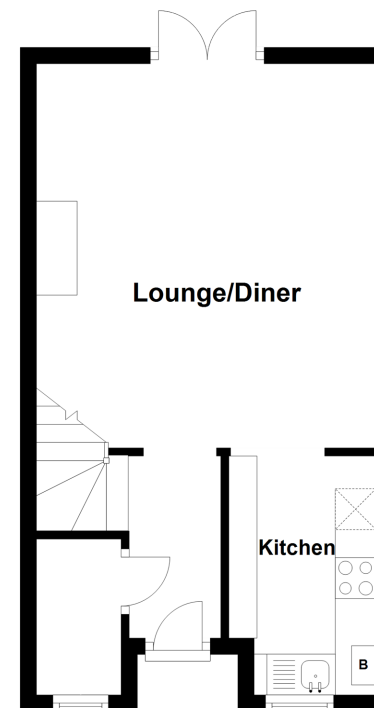
Bathroom

OUTSIDE

Front and Rear Gardens

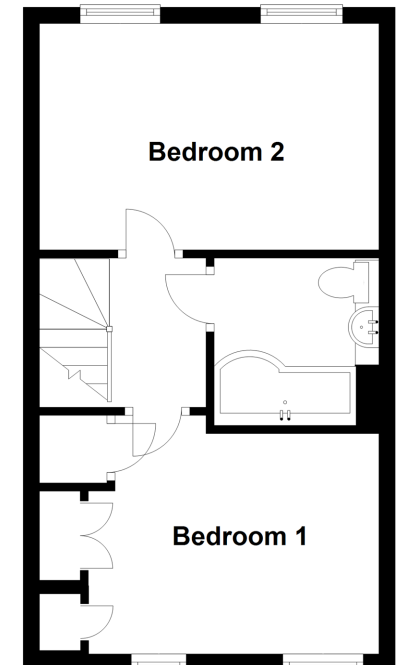
Ground Floor

Approx. 31.1 sq. metres (335.2 sq. feet)



First Floor

Approx. 32.3 sq. metres (347.4 sq. feet)



Call Gravesend - 01474 352417 ■ wardsofken.co.uk

- Legal advice should be taken to verify fixtures/fittings, planning, alterations and/or lease details
- Appliances & services are untested, dimensions are approximate and floor plans are not to scale