



Price

£94,500

Leasehold

1x  1x  1x 

**Regents Court, West
Street, Gravesend, Kent,
DA11**

OVER 60?

You could get up to
59% off the price!*

Wards
Helping you move forwards



Main features

- Second floor retirement apartment for the over 55's with parking
- Lift access to all floors
- Communal gardens, lounge and launderette
- Within walking distance to Gravesend
- No forward chain

Accommodation

SECOND FLOOR

Entrance Hall

Lounge : 17'7 x 10'3 (5.36m x 3.13m)

Kitchen : 7'8 x 6'4 (2.34m x 1.93m)

Bedroom : 12'5 x 8'2 (3.79m x 2.49m)

Shower Room

OUTSIDE

Parking

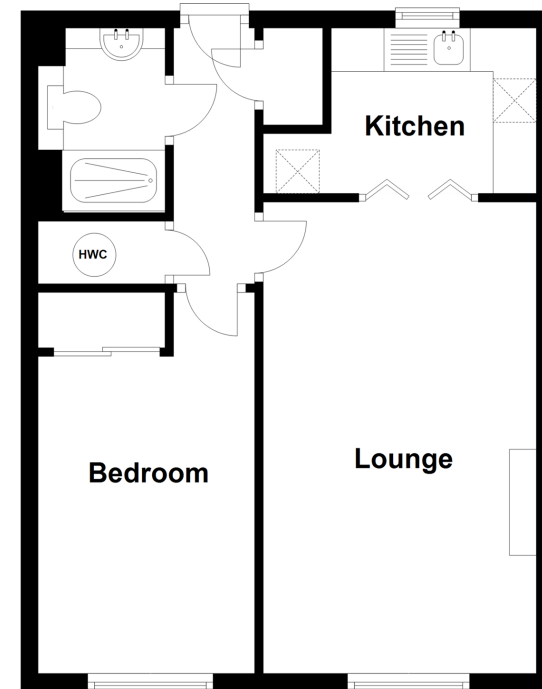
Communal Garden

Communal Lounge

Communal Launderette

Second Floor

Approx. 43.0 sq. metres (462.4 sq. feet)



Call Gravesend - 01474 352417 ■ wardsof Kent.co.uk

- Legal advice should be taken to verify fixtures/fittings, planning, alterations and/or lease details
- Appliances & services are untested, dimensions are approximate and floor plans are not to scale
- Our Homewise partnership offer a 'Home for Life' plan to buyers over 60, granting a lifetime lease for your protection and reducing the purchase price by up to 59%



11138747/20220704/NO/NO