



Price

£52,000

Leasehold

1x  1x  1x 

**Nelson Court, Glen
View, Gravesend, Kent,
DA12**

OVER 60?

Secure this property
for up to **59% less!**



Video Tour available

Wards
Helping you move forwards



Main features

- First floor retirement apartment for the over 60's
- Immaculate condition throughout
- Residents and visitors car parking
- Communal lounge and gardens
- Offered for sale with no forward chain

Accommodation

FIRST FLOOR

Entrance Hall

Lounge/Diner: 24'8 x 10'4 maximum (7.52m x 3.15m)

Kitchen : 8'5 x 7'7 (2.57m x 2.31m)

Bedroom : 13'5 up to fitted wardrobes x 10'0 maximum (4.09m x 3.05m)

Bath/Wetroom

OUTSIDE

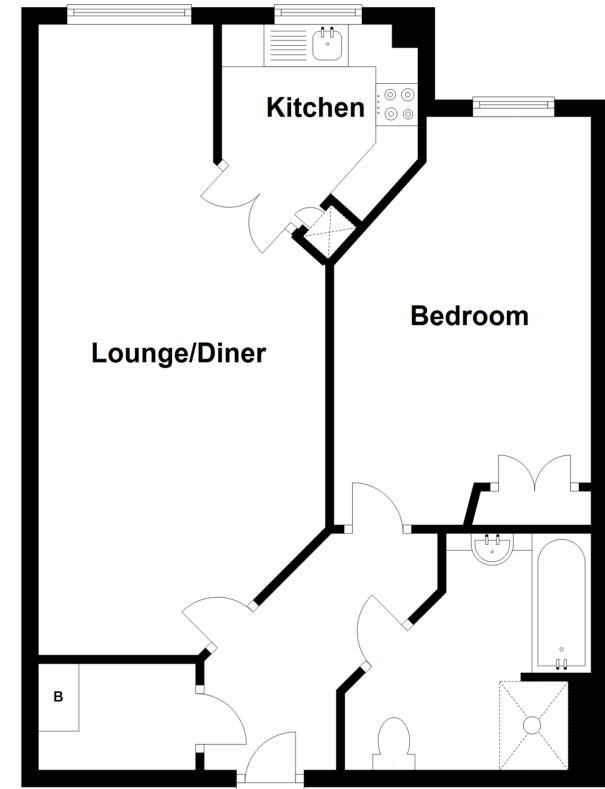
Communal Lounge Area

Communal Garden

Residential & Visitor Parking

First Floor

Approx. 55.5 sq. metres (597.2 sq. feet)



Call Gravesend - 01474 352417 ■ wardsofkent.co.uk

- Legal advice should be taken to verify fixtures/fittings, planning, alterations and/or lease details
- Appliances & services are untested, dimensions are approximate and floor plans are not to scale
- Through a Homewise Home For Life Plan people aged 60+ can secure this property for up to 59% less, by purchasing a Lifetime Lease.



11138803/20230220/LK/ME