



Price
£490,000

Freehold

3x  2x  3x 

**Brook Road, Northfleet,
Gravesend, Kent, DA11**

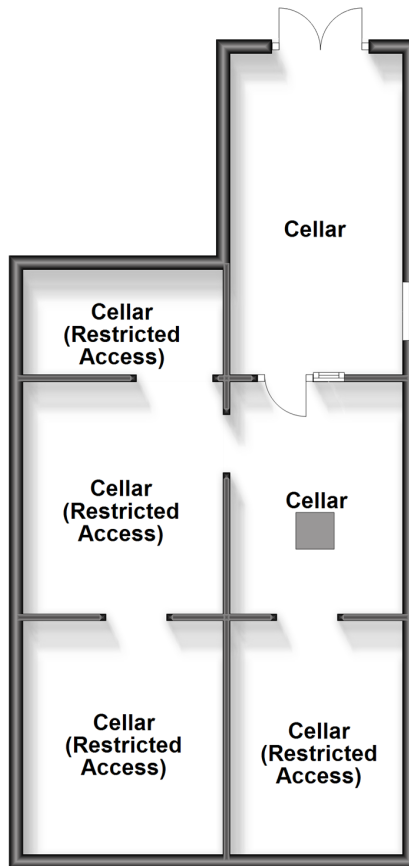
OVER 60?

Secure this property
for up to **59% less!**

Wards
Helping you move forwards

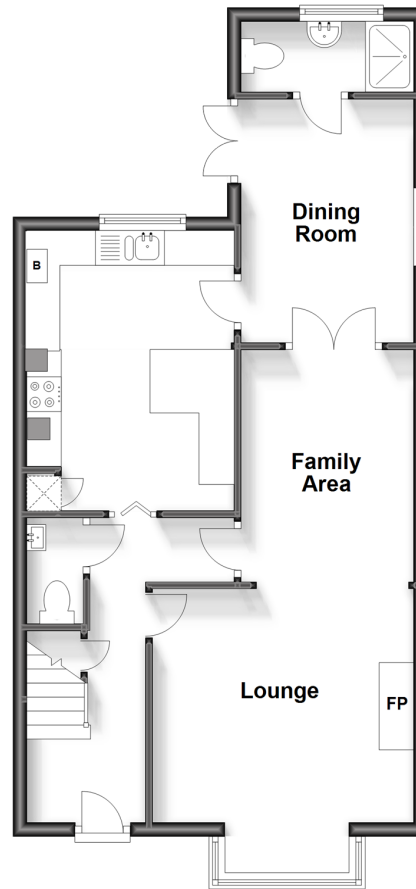
Basement

Approx. 54.0 sq. metres (581.2 sq. feet)



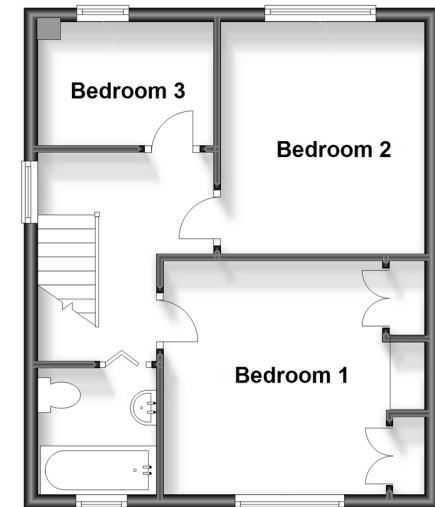
Ground Floor

Approx. 55.8 sq. metres (600.5 sq. feet)



First Floor

Approx. 38.1 sq. metres (409.7 sq. feet)



Accommodation

GROUND FLOOR

Entrance Hall
Cloakroom
Lounge: 13'8 x 12'4 (4.17m x 3.76m)
Family Area: 14'4 x 8'1 (4.37m x 2.47m)
Dining Room : 11'9 x 7'3 (3.58m x 2.21m)
Kitchen : 13'6 x 9'8 (4.12m x 2.95m)
Shower Room

BASEMENT

Cellar Room
Cellar divided into 5 areas

FIRST FLOOR

Landing
Bedroom 1: 11'7 x 11'1 (3.53m x 3.38m)
Bedroom 2: 10'8 x 9'9 (3.25m x 2.97m)
Bedroom 3: 8'3 x 5'9 (2.52m x 1.75m)
Bathroom

OUTSIDE

Front Garden
Driveway
Garage
Rear Garden



Main features

- Extended family home
- Downstairs shower room and upstairs bathroom
- Lounge, family area and dining room
- Handy cellar with room opening out into garden
- Within walking distance to shops and good schools



Nearest Schools

Primary Schools: Cecil Road Primary and Nursery School 0.4 miles, Dover Road Community Primary 0.5 miles, St Botolph's C of E Voluntary Aided Primary 0.7 miles

Secondary Schools: Northfleet Technology College 0.5

Transport Information

Train Stations: Gravesend 1.0 miles, Ebbsfleet International 1.8 miles, Northfleet 2.0 miles

Address

Brook Road, Northfleet, Gravesend, Kent, DA11

Directions

For directions to this property please contact us.





Wards
Helping you move forwards

Call Gravesend Branch 01474 352417 ■ wardsofkent.co.uk



- Legal advice should be taken to verify fixtures/fittings, planning, alterations and/or lease details
- Appliances & services are untested, dimensions are approximate and floor plans are not to scale
- Through a Homewise Home For Life Plan people aged 60+ can secure this property for up to 59% less, by purchasing a Lifetime Lease.



11138928/20231120/NO/NO