



Price
£725,000

Freehold

3x  1x  2x 

**Thong Lane, Gravesend,
Kent, DA12**

OVER 60?

Secure this property
for up to **59% less!**

Wards
Helping you move forwards



Main features

- Detached home on a sizeable plot
- Potential to develop the property subject to planning permission
- Backs on to beautiful countryside
- Walking distance of shops and close to the A2 motorway
- Sold with no forward chain

Accommodation

GROUND FLOOR

Entrance Hall
Cloakroom
Lounge : 18'8 x 12'7 (5.69m x 3.84m)
Dining Area: 10'7 x 9'3 (3.23m x 2.82m)
Kitchen : 18'0 x 8'9 (5.49m x 2.67m)
Family Room: 12'7 x 9'5 (3.84m x 2.87m)

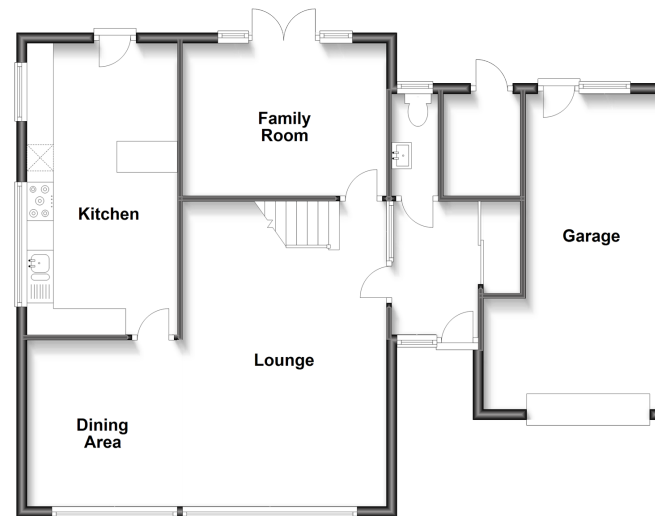
FIRST FLOOR

Landing
Bedroom 1: 14'0 x 9'4 (4.27m x 2.85m)
Bedroom 2: 16'0 x 9'2 (4.88m x 2.80m)
Bedroom 3: 9'5 x 9'2 (2.87m x 2.80m)
Bathroom

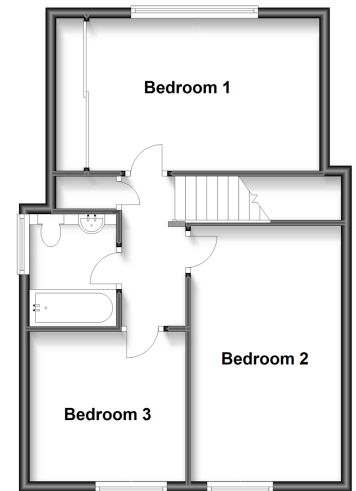
OUTSIDE

Front Garden
Driveway
Garage
Side Garden
Rear Garden

Ground Floor
Approx. 88.7 sq. metres (955.2 sq. feet)



First Floor
Approx. 48.5 sq. metres (521.6 sq. feet)



Call Gravesend - 01474 352417 ■ wardsofkent.co.uk

- If buying to let, the energy rating will need to be improved to at least 'E' rating before you can let the property
- Appliances & services are untested, dimensions are approximate and floor plans are not to scale

- Legal advice should be taken to verify fixtures/fittings, planning, alterations and/or lease details
- Through a Homewise Home For Life Plan people aged 60+ can secure this property for up to 59% less, by purchasing a Lifetime Lease.