



OVER 60?

Secure this property
for up to **59% less!**

Price

£400,000

Freehold

3x  1x  3x 

**Springhead Road,
Northfleet, Gravesend,
Kent, DA11**

Wards
Helping you move forwards



Main features

- **Spacious family home**
- **Separate lounge and dining area with an additional breakfast area**
- **Large conservatory**
- **Utility room and downstairs cloakroom**
- **Large garden with patio, decking and fantastic views**

Accommodation

SPLIT LEVEL GROUND FLOOR

Entrance Hall

Lounge : 14'8 x 14'3 into bay (4.47m x 4.35m)

Dining Area: 11'10 x 11'4 (3.61m x 3.46m)

Kitchen : 9'5 x 8'6 (2.87m x 2.59m)

Breakfast Area: 12'6 x 8'9 (3.81m x 2.67m)

Utility Room

Conservatory: 18'7 x 13'2 (5.67m x 4.02m)

Cloakroom

FIRST FLOOR

Landing

Bedroom 1: 14'5 x 12'5 (4.40m x 3.79m)

Bedroom 2: 11'4 x 11'0 (3.46m x 3.36m)

Bedroom 3: 8'6 x 6'3 (2.59m x 1.91m)

Bathroom

OUTSIDE

Front Garden

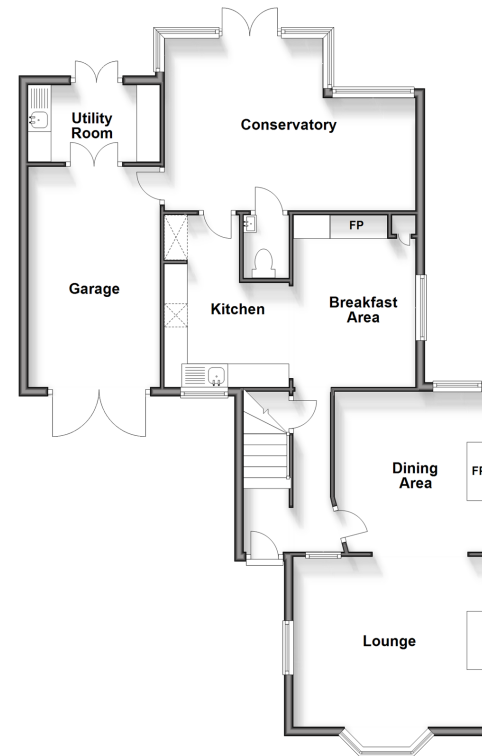
Driveway

Garage

Rear Garden

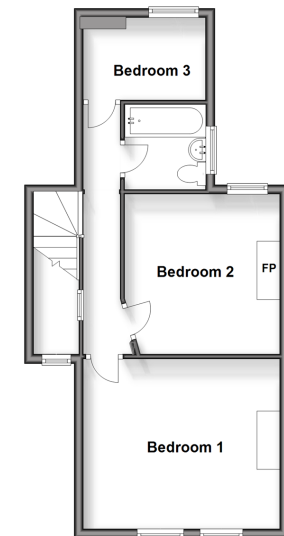
Split Level Ground Floor

Approx. 92.3 sq. metres (993.2 sq. feet)



First Floor

Approx. 44.4 sq. metres (477.7 sq. feet)



Call Gravesend - 01474 352417 ■ wardsofkent.co.uk

■ Legal advice should be taken to verify fixtures/fittings, planning, alterations and/or lease details
 ■ Through a Homewise Home For Life Plan people aged 60+ can secure this property for up to 59% less, by purchasing a Lifetime Lease.

■ Appliances & services are untested, dimensions are approximate and floor plans are not to scale



11139060/20240504/MM/AH