



**Price**  
**£325,000**

**Leasehold**

3x  1x  1x 

**Hall Road, Northfleet,  
Gravesend, Kent, DA11**

*Wards*  
Helping you move forwards





## Main features

- End of terrace house ideal for first time buyers
- Parking to the rear for 2 cars
- Kitchen/diner
- Nicely decorated throughout
- Within walking distance of local schools

## Accommodation

### GROUND FLOOR

Entrance Porch

Lounge: 15'10 x 15'6 (4.83m x 4.73m)

Kitchen : 15'5 x 10'2 (4.70m x 3.10m)

### FIRST FLOOR

Landing

Bedroom 1: 13'0 x 8'8 (3.97m x 2.64m)

Bedroom 2: 10'1 x 9'7 (3.08m x 2.92m)

Bedroom 3: 9'7 x 6'5 (2.92m x 1.96m)

Shower Room

### OUTSIDE

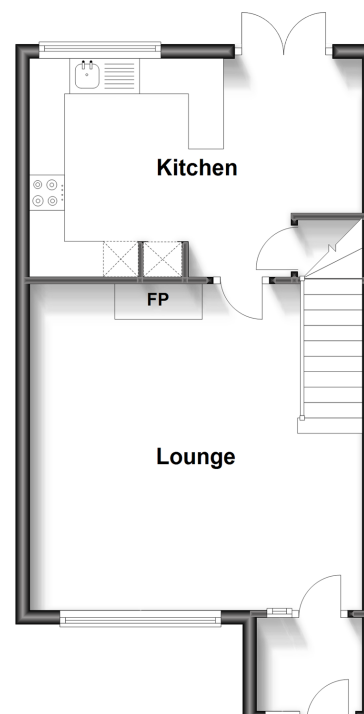
Front Garden

Rear Garden

Off Road Parking To Rear

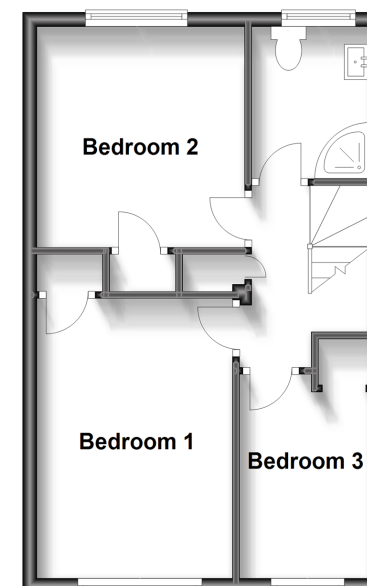
### Ground Floor

Approx. 39.3 sq. metres (422.9 sq. feet)



### First Floor

Approx. 37.1 sq. metres (399.8 sq. feet)



**Call Gravesend - 01474 352417 ■ wardsofkent.co.uk**

■ Legal advice should be taken to verify fixtures/fittings, planning, alterations and/or lease details

■ Appliances & services are untested, dimensions are approximate and floor plans are not to scale



11139073/20240318/AH/NO