



**Price**  
**£380,000**

**Freehold**

3x  1x  2x 

**Dombey Close, Higham,  
Rochester, Kent, ME3**

**OVER 60?**

Secure this property  
for up to **59% less!**

*Wards*  
Helping you move forwards





## Main features

- A beautifully presented family home in the popular village of Higham
- Orangery with bi-fold doors
- Handy summerhouse currently used as a gym
- Easy access to the A2/M2 motorway links
- Within walking distance to Higham railway station

## Accommodation

### GROUND FLOOR

Open Porch : 11'3 x 2'11 (3.43m x 0.89m)  
 Lounge: 16'8 x 11'10 (5.08m x 3.61m)  
 Kitchen/Diner: 19'6 x 8'4 (5.95m x 2.54m)  
 Orangery: 17'2 x 9'5 (5.24m x 2.87m)

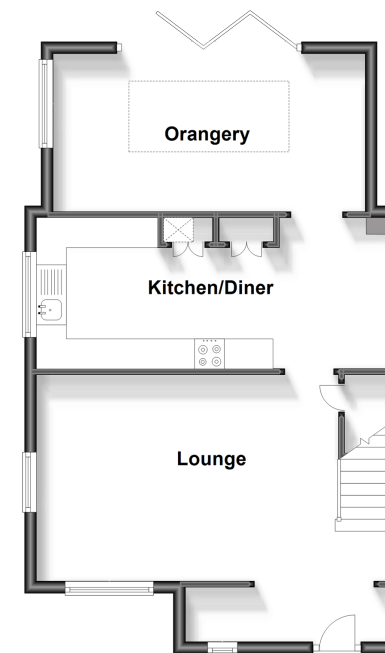
### FIRST FLOOR

Landing  
 Bedroom 1: 12'3 x 8'7 (3.74m x 2.62m)  
 Bedroom 2: 11'0 x 10'11 (3.36m x 3.33m)  
 Bedroom 3: 8'8 x 7'10 (2.64m x 2.39m)  
 Bathroom : 7'3 x 5'5 (2.21m x 1.65m)

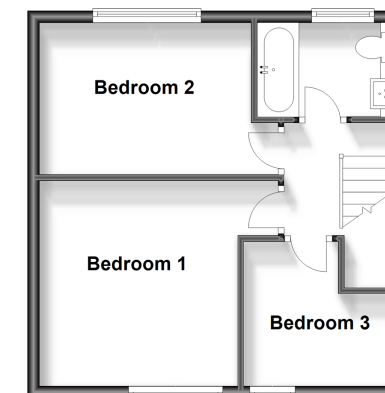
### OUTSIDE

Driveway  
 Rear Garden  
 Summerhouse : 17'7 x 11'10 (5.36m x 3.61m)

**Ground Floor**  
 Approx. 53.7 sq. metres (578.2 sq. feet)



**First Floor**  
 Approx. 35.9 sq. metres (386.8 sq. feet)



**Call Gravesend - 01474 352417 ■ wardsofkent.co.uk**

- Legal advice should be taken to verify fixtures/fittings, planning, alterations and/or lease details
- Appliances & services are untested, dimensions are approximate and floor plans are not to scale
- Through a Homewise Home For Life Plan people aged 60+ can secure this property for up to 59% less, by purchasing a Lifetime Lease.



11139128/20230926/NO/SB