



OVER 60?

You could get up to
59% off the price!*



Video Tour available

Price

£400,000

Freehold

4x  1x  2x 

**Hillingdon Road,
Gravesend, Kent, DA11**

Wards
Helping you move forwards



Main features

- Spacious extended family home
- Good sized lounge and dining area
- Large loft bedroom with lots of eaves space for storage
- Walking distance to schools and shops
- Offered for sale with no forward chain

Accommodation

GROUND FLOOR

Entrance Porch

Entrance Hall

Lounge: 13'8 x 12'2 (4.17m x 3.71m)

Dining Area: 11'6 x 9'9 (3.51m x 2.97m)

Kitchen: 12'1 x 7'8 (3.69m x 2.34m)

Lean-To: 15'2 x 6'5 (4.63m x 1.96m)

FIRST FLOOR

Landing

Bedroom 1: 13'8 x 9'4 into fitted wardrobes (4.17m x 2.85m)

Bedroom 2: 12'1 x 11'5 (3.69m x 3.48m)

Bedroom 3: 7'6 x 6'3 (2.29m x 1.91m)

Bathroom

SECOND FLOOR

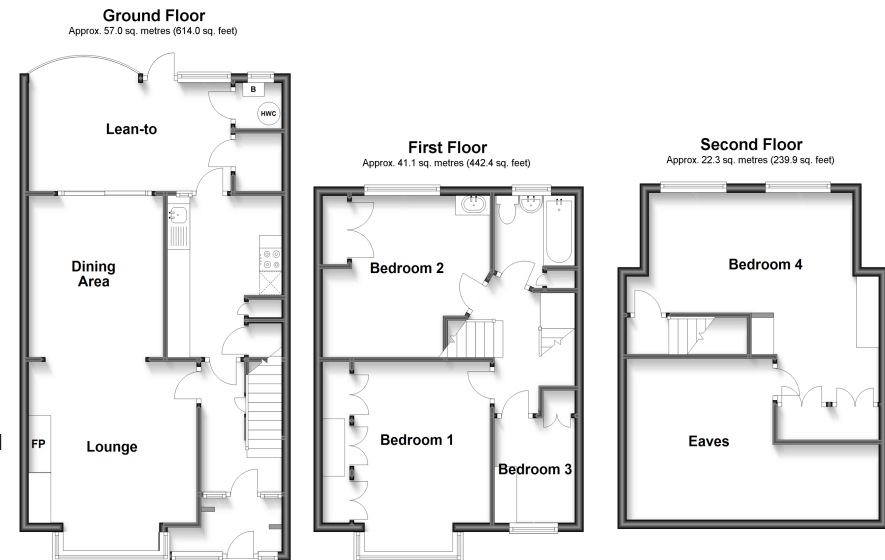
Landing

Bedroom 4: (L-shaped) 14'7 x 9'1 (4.45m x 2.77m) plus 7'5 x 9'5 into fitted wardrobes (2.26m x 2.87m)

Eaves

OUTSIDE

Front and Rear Gardens



Call Gravesend - 01474 352417 ■ wardsofkent.co.uk

- If buying to let, the energy rating will need to be improved to at least 'E' rating before you can let the property
- Appliances & services are untested, dimensions are approximate and floor plans are not to scale

- Legal advice should be taken to verify fixtures/fittings, planning, alterations and/or lease details
- Our Homewise partnership offer a 'Home for Life' plan to buyers over 60, granting a lifetime lease for your protection and reducing the purchase price by up to 59%