



OVER 60?

Secure this property
for up to **59% less!**

Price
£425,000

Freehold

3x  2x  2x 

**Thong Lane, Shorne,
Gravesend, Kent, DA12**

Wards
Helping you move forwards



Main features

- Beautiful extended family home
- Stunning views across the river and farmer's fields
- Extended kitchen/dining area
- Modernised throughout
- Double garage and additional parking to the rear with easy access

Accommodation

GROUND FLOOR

Entrance Hall

Lounge : 13'7 x 10'10 (4.14m x 3.30m)

Dining Area: 11'8 x 10'3 (3.56m x 3.13m)

Kitchen : 15'7 x 15'1 (4.75m x 4.60m)

Utility Area

Shower Room

FIRST FLOOR

Landing

Bedroom 1: 13'7 x 10'5 (4.14m x 3.18m)

Bedroom 2: 12'0 x 10'5 (3.66m x 3.18m)

Bedroom 3: 7'5 x 6'5 (2.26m x 1.96m)

Bathroom

OUTSIDE

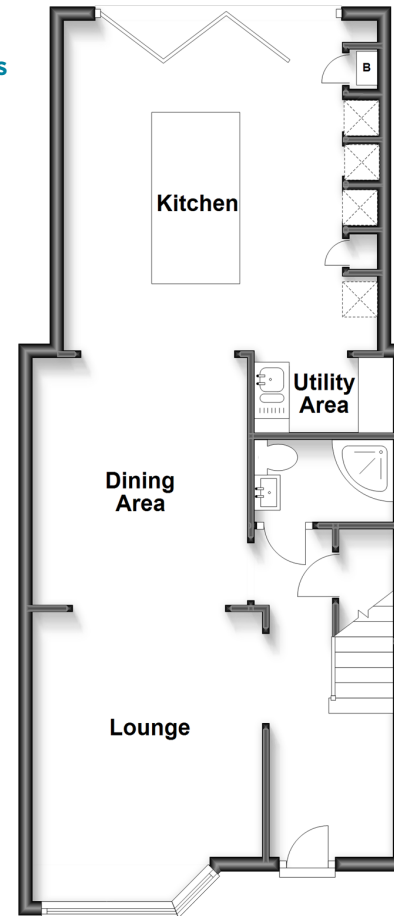
Front Garden

Rear Garden

Double Garage to Rear

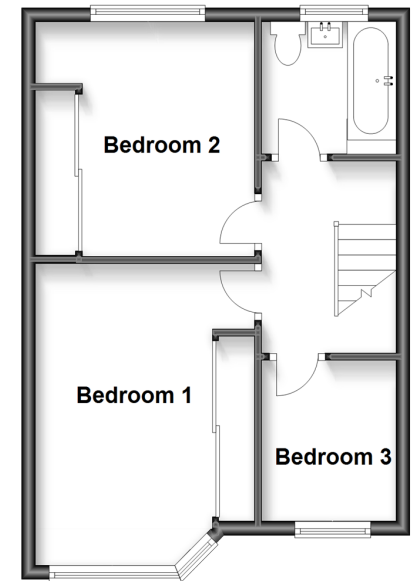
Ground Floor

Approx. 59.8 sq. metres (643.3 sq. feet)



First Floor

Approx. 38.2 sq. metres (411.2 sq. feet)



Call Gravesend - 01474 352417 ■ wardsof Kent.co.uk

- Legal advice should be taken to verify fixtures/fittings, planning, alterations and/or lease details
- Appliances & services are untested, dimensions are approximate and floor plans are not to scale
- Through a Homewise Home For Life Plan people aged 60+ can secure this property for up to 59% less, by purchasing a Lifetime Lease.



11139225/20240315/AH/NO