



Price
£310,000

Freehold

3x  1x  2x 

**Cutmore Street,
Gravesend, Kent, DA11**

Wards
Helping you move forwards



Main features

- Immaculately presented period property
- Extended kitchen
- Downstairs bathroom
- Within walking distance of Gravesend high speed train station
- Sold with no forward chain

Accommodation

GROUND FLOOR

Entrance Hall

Lounge : 11'3 x 10'3 (3.43m x 3.13m)

Dining Room : 10'6 x 8'0 (3.20m x 2.44m)

Kitchen : 18'5 x 10'2 at widest point (5.62m x 3.10m)

Bathroom

SPLIT LEVEL FIRST FLOOR

Landing

Bedroom 1: 13'5 x 11'1 (4.09m x 3.38m)

Bedroom 2: 10'5 x 8'6 (3.18m x 2.59m)

Bedroom 3: 9'1 x 7'1 (2.77m x 2.16m)

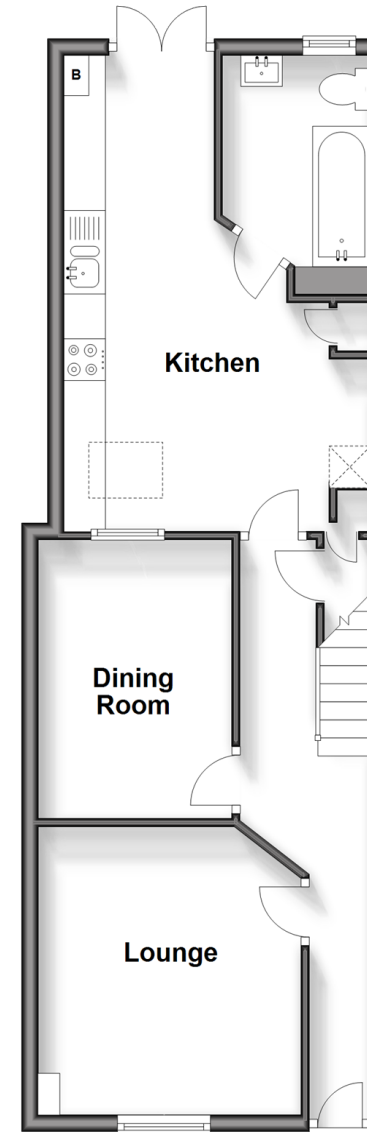
OUTSIDE

Front Garden

Rear Garden

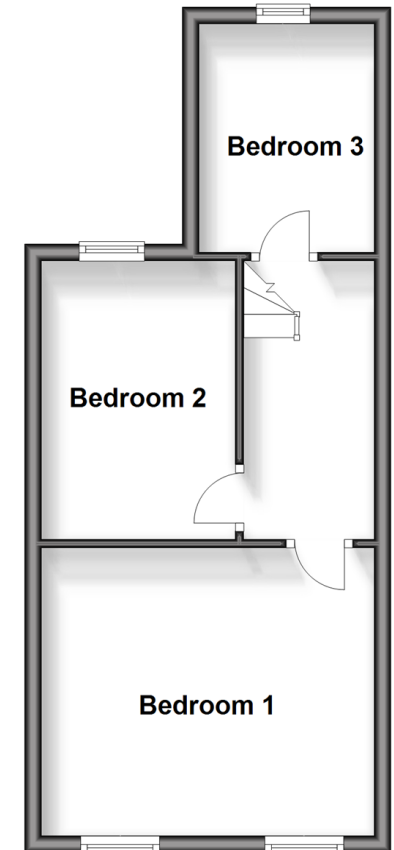
Ground Floor

Approx. 49.0 sq. metres (527.8 sq. feet)



Split Level First Floor

Approx. 33.6 sq. metres (361.7 sq. feet)



Call Gravesend - 01474 352417 ■ wardsofkent.co.uk

- Legal advice should be taken to verify fixtures/fittings, planning, alterations and/or lease details
- Appliances & services are untested, dimensions are approximate and floor plans are not to scale



11139325/20240430/NO/NO