



Price
£350,000

Freehold

3x  1x  2x 

**Springhead Road,
Northfleet, Gravesend,
Kent, DA11**

OVER 60?

Secure this property
for up to **59% less!**

Wards
Helping you move forwards



Main features

- **3 bedroom semi-detached house**
- **Property benefits from a conservatory**
- **Separate lounge and dining area**
- **Walking distance to local shops and amenities**
- **Offered for sale with no forward chain**

Accommodation

GROUND FLOOR

Entrance Hall
 Lounge : 13'6 x 12'2 (4.12m x 3.71m)
 Dining Area: 11'6 x 9'8 (3.51m x 2.95m)
 Kitchen: 12'9 x 8'3 (3.89m x 2.52m)
 Conservatory: 15'3 x 13'3 (4.65m x 4.04m)

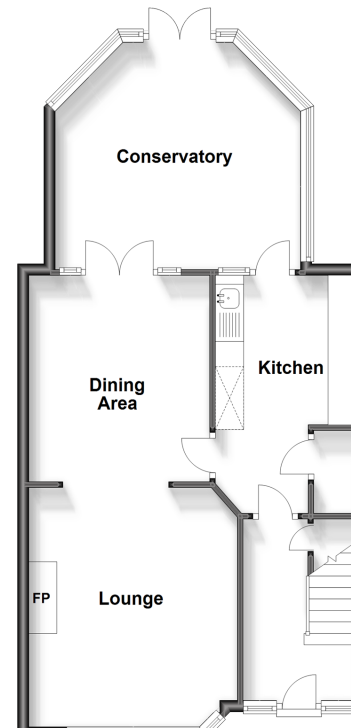
FIRST FLOOR

Landing
 Bedroom 1 : 13'3 x 9'7 (4.04m x 2.92m)
 Bedroom 2: 11'7 x 11'6 (3.53m x 3.51m)
 Bedroom 3 : 7'0 1 x 6'8 (2.14m x 2.03m)
 Bathroom: 11'12 x 6'7 (3.66m x 2.01m)

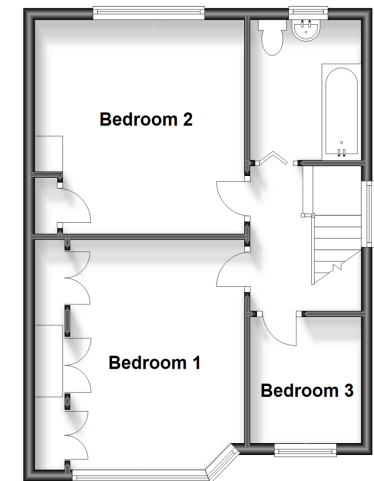
OUTSIDE

Front Garden
 Driveway
 Rear Garden
 Garage to the Rear

Ground Floor
 Approx. 60.8 sq. metres (654.5 sq. feet)



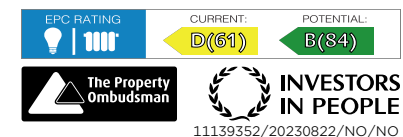
First Floor
 Approx. 44.3 sq. metres (477.3 sq. feet)



Call Gravesend - 01474 352417 ■ wardsofkent.co.uk

■ Legal advice should be taken to verify fixtures/fittings, planning, alterations and/or lease details
 ■ Through a Homewise Home For Life Plan people aged 60+ can secure this property for up to 59% less, by purchasing a Lifetime Lease.

■ Appliances & services are untested, dimensions are approximate and floor plans are not to scale



11139352/20230822/NO/NO