



**Offers In  
Excess Of  
£750,000  
Freehold**

4x  2x  2x 

**Norah Lane, Higham,  
Rochester, Kent, ME3**

*Wards*  
Helping you move forwards





## Main features

- 4 bedroom detached house
- Open plan lounge/dining, study, en-suite to main bedroom
- Village location,
- walking distance to shops and schools

## Accommodation

### GROUND FLOOR

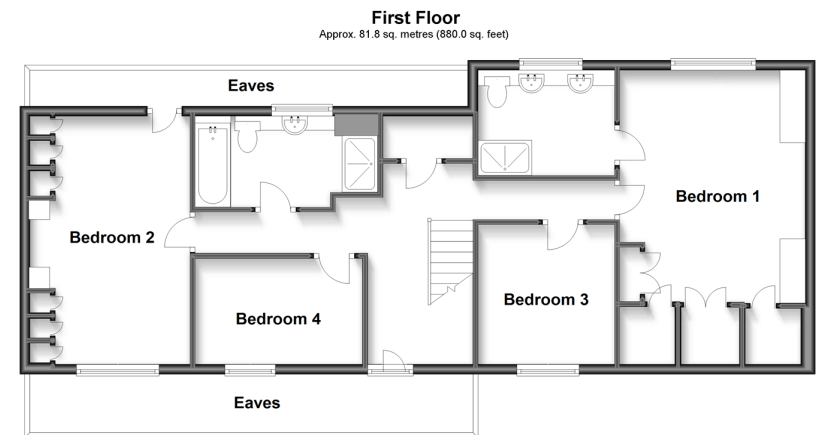
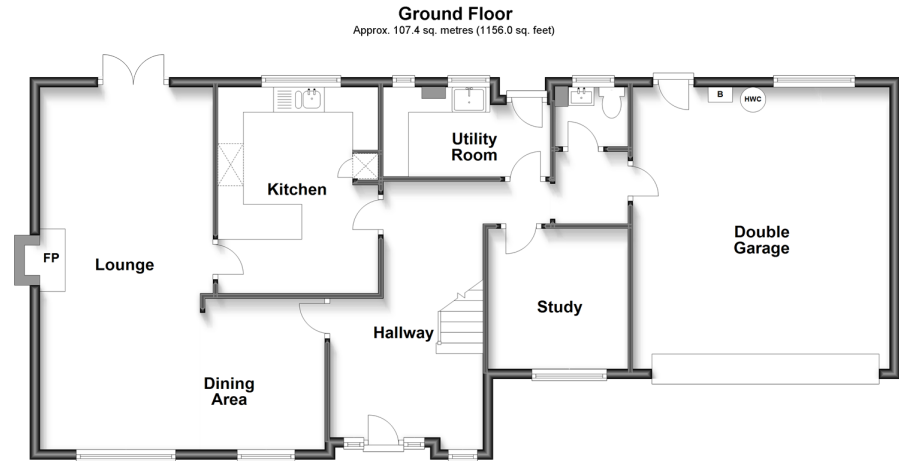
Hallway  
 Lounge/Dining Area: 23'8 x 18'5 (7.22m x 5.62m)  
 Kitchen: 13'4 x 10'2 (4.07m x 3.10m)  
 Utility Room  
 Study: 9'3 x 8'11 (2.82m x 2.72m)

### FIRST FLOOR

Landing  
 Bedroom 1: 15'8 x 13'0 (4.78m x 3.97m)  
 En-suite Shower Room: 9'1 x 6'8 (2.77m x 2.03m)  
 Bedroom 2: 16'3 x 10'4 (4.96m x 3.15m)  
 Bedroom 3: 9'9 x 9'2 (2.97m x 2.80m)  
 Bedroom 4: 10'8 x 6'7 (3.25m x 2.01m)  
 Bathroom

### OUTSIDE

Double Garage  
 Driveway  
 Front Garden  
 Rear Garden



**Call Gravesend - 01474 352417 ■ [wardsofkent.co.uk](http://wardsofkent.co.uk)**

- Legal advice should be taken to verify fixtures/fittings, planning, alterations and/or lease details
- Appliances & services are untested, dimensions are approximate and floor plans are not to scale