



**Offers In
Excess Of
£500,000
Freehold**

4x  2x  1x 

**Michael Gardens,
Gravesend, Kent, DA12**

Wards
Helping you move forwards



Main features

- Detached house in a popular development
- Spacious throughout
- En-suite shower room and family bathroom
- Downstairs cloakroom and conservatory
- Close to the A2 motorway

Accommodation

GROUND FLOOR

Entrance Hall
Cloakroom
Lounge/Diner : 18'8 x 11'0 (5.69m x 3.36m)
Kitchen : 12'5 x 9'3 (3.79m x 2.82m)
Conservatory : 11'8 x 8'6 (3.56m x 2.59m)

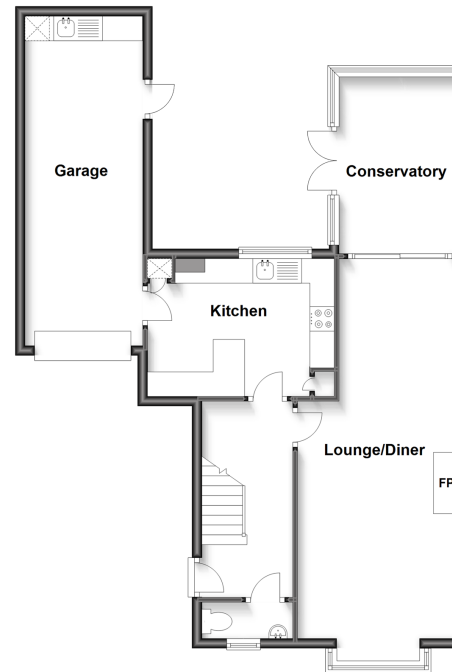
FIRST FLOOR

Landing
Bedroom 1: 12'1 x 11'8 (3.69m x 3.56m)
En-suite Shower Room
Bedroom 2: 15'5 x 10'1 (4.70m x 3.08m)
Bedroom 3: 10'4 x 9'3 (3.15m x 2.82m)
Bedroom 4: 8'2 x 7'0 (2.49m x 2.14m)
Bathroom

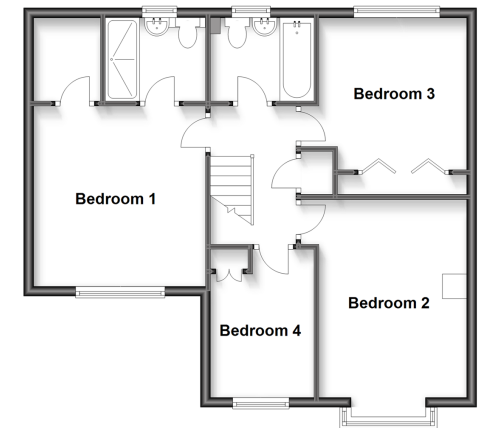
OUTSIDE

Front Garden
Garage
Driveway
Rear Garden

Ground Floor
Approx. 69.5 sq. metres (747.9 sq. feet)



First Floor
Approx. 60.7 sq. metres (653.4 sq. feet)



Call Gravesend - 01474 352417 ■ wardsofkent.co.uk

■ Legal advice should be taken to verify fixtures/fittings, planning, alterations and/or lease details

■ Appliances & services are untested, dimensions are approximate and floor plans are not to scale



11139459/20230518/MM/NO