



Price
£325,000

Freehold

3x  1x  1x 

**Brunswick Walk,
Gravesend, Kent, DA12**

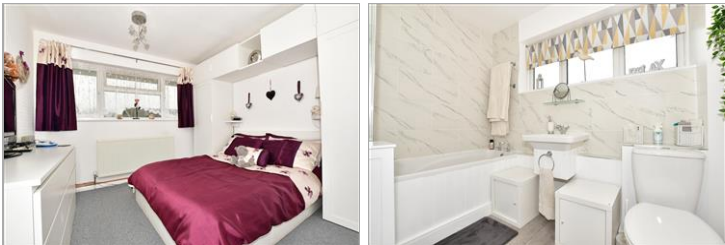
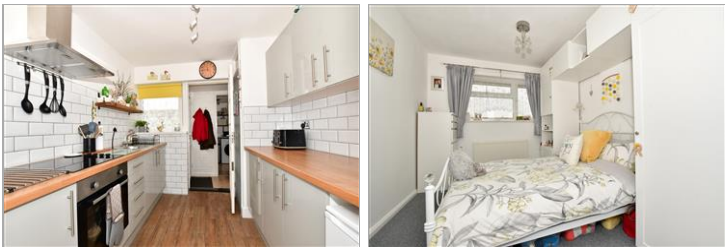
OVER 60?

Secure this property
for up to **59% less!**



Video Tour available

Wards
Helping you move forwards



Main features

- A beautifully presented home ideal for first time buyers
- Low maintenance rear garden
- Garage at the rear
- Within walking distance to Gravesend railway station
- Offered for sale with no forward chain

Accommodation

GROUND FLOOR

Entrance Porch
 Entrance Hall
 Lounge/Diner: 23'6 x 11'6 (7.17m x 3.51m)
 Kitchen : 9'3 x 8'0 (2.82m x 2.44m)
 Utility Room : 6'7 x 5'1 (2.01m x 1.55m)

FIRST FLOOR

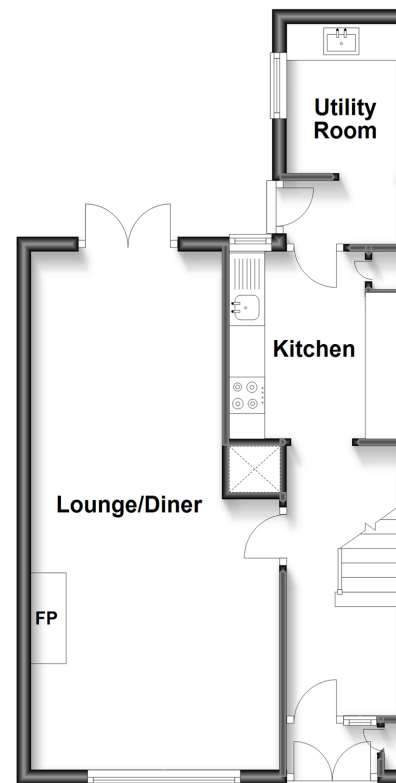
Landing
 Bedroom 1: 14'4 x 8'10 (4.37m x 2.69m)
 Bedroom 2: 10'8 x 9'7 (3.25m x 2.92m)
 Bedroom 3: 9'9 x 6'9 (2.97m x 2.06m)
 Bathroom

OUTSIDE

Front Garden
 Rear Garden
 Garage at the Rear

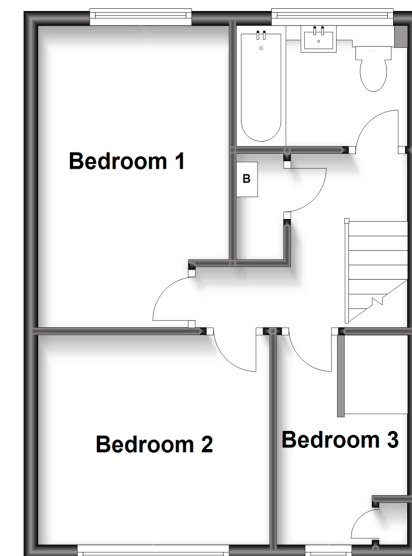
Ground Floor

Approx. 42.3 sq. metres (455.4 sq. feet)



First Floor

Approx. 37.3 sq. metres (401.3 sq. feet)



Call Gravesend - 01474 352417 ■ wardsofkent.co.uk

- Legal advice should be taken to verify fixtures/fittings, planning, alterations and/or lease details
- Appliances & services are untested, dimensions are approximate and floor plans are not to scale
- Through a Homewise Home For Life Plan people aged 60+ can secure this property for up to 59% less, by purchasing a Lifetime Lease.



11139471/20230227/SB/SB