



Price

£120,000

Leasehold

1x  1x  1x 

**Wimborne House, Truro
Road, Gravesend, Kent,
DA12**

Wards
Helping you move forwards



Main features

- Retirement property for the over 60s
- 75% share available to purchase
- Own garden directly off the lounge
- Additional communal gardens and parking
- Secure entrance with assistance on hand at the touch of a button

Accommodation

GROUND FLOOR

Entrance Hall

Kitchen : 9'10 x 9'0 (3.00m x 2.75m)

Lounge : 13'4 x 11'5 (4.07m x 3.48m)

Bedroom : 12'4 x 12'2 (3.76m x 3.71m)

Wet Room : 10'0 x 9'10 (3.05m x 3.00m)

OUTSIDE

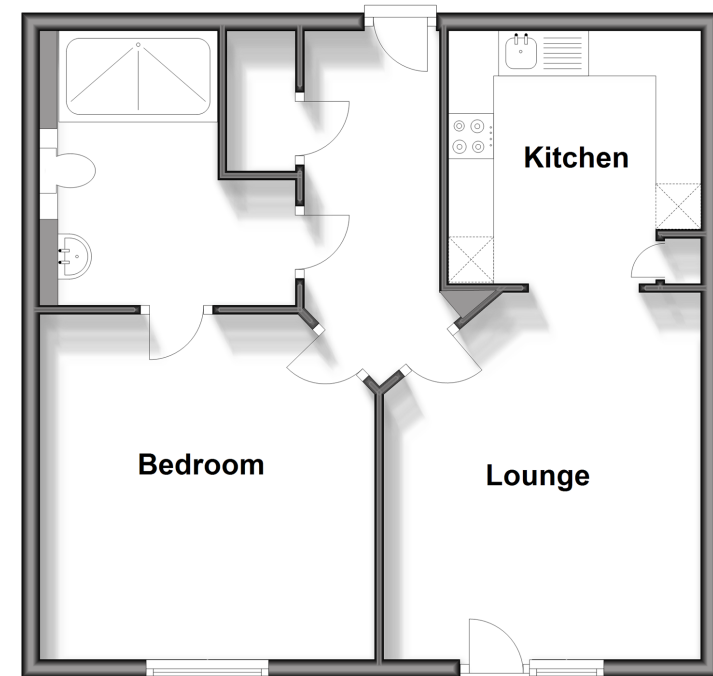
Rear Garden

Communal Garden

Off Road Parking

Ground Floor

Approx. 51.1 sq. metres (550.6 sq. feet)



Call Gravesend - 01474 352417 ■ wardsofkent.co.uk

■ Legal advice should be taken to verify fixtures/fittings, planning, alterations and/or lease details

■ Appliances & services are untested, dimensions are approximate and floor plans are not to scale



11139507/20231211/MM/NO