



Price
£575,000

Freehold

4x  2x  2x 

**Rowmarsh Close,
Northfleet, Gravesend,
Kent, DA11**

OVER 60?

Secure this property
for up to **59% less!**

Wards
Helping you move forwards



Main features

- Spacious detached family home
- En-suite to main bedroom
- Open plan lounge/dining area
- Large conservatory that can be used as a fantastic social area
- Walking distance of shops and schools

Accommodation

GROUND FLOOR

Entrance Hall
 Kitchen : 10'2 x 9'1 (3.10m x 2.77m)
 Utility Room
 Cloakroom
 Lounge : 15'1 x 11'6 (4.60m x 3.51m)
 Dining Area: 9'5 x 9'1 (2.87m x 2.77m)
 Conservatory : 24'0 x 14'4 (7.32m x 4.37m)

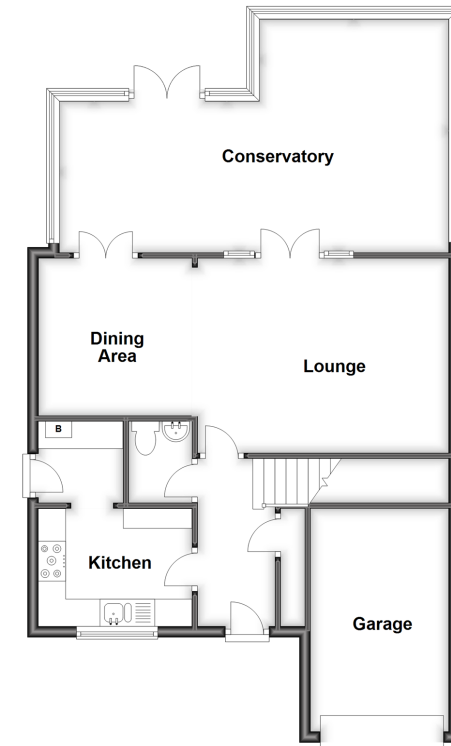
FIRST FLOOR

Landing
 Bedroom 1: 12'5 x 12'4 (3.79m x 3.76m)
 En-suite Shower Room
 Bedroom 2: 10'7 x 9'0 (3.23m x 2.75m)
 Bedroom 3 : 8'9 x 8'9 (2.67m x 2.67m)
 Bedroom 4: 7'8 x 7'3 (2.34m x 2.21m)
 Shower Room

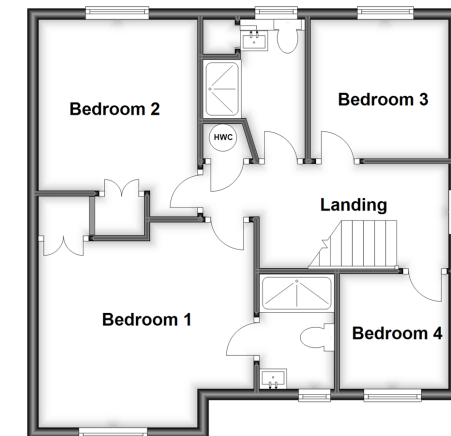
OUTSIDE

Front Garden
 Driveway
 Integral Garage
 Rear Garden

Ground Floor
 Approx. 81.0 sq. metres (872.2 sq. feet)

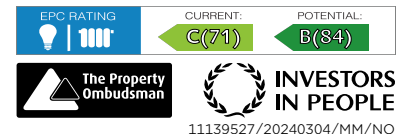


First Floor
 Approx. 52.8 sq. metres (568.1 sq. feet)



Call Gravesend - 01474 352417 ■ wardsof Kent.co.uk

- Legal advice should be taken to verify fixtures/fittings, planning, alterations and/or lease details
- Appliances & services are untested, dimensions are approximate and floor plans are not to scale
- Through a Homewise Home For Life Plan people aged 60+ can secure this property for up to 59% less, by purchasing a Lifetime Lease.



11139527/20240304/MM/NO