



Price

£1,200,000

Freehold

4x  2x  3x 

**Pear Tree Lane, Shorne,
Gravesend, Kent, DA12**

OVER 60?

Secure this property
for up to **59% less!**

Wards
Helping you move forwards

Accommodation

GROUND FLOOR

Entrance Hall

Lounge: 22'3 x 11'8 (6.79m x 3.56m)

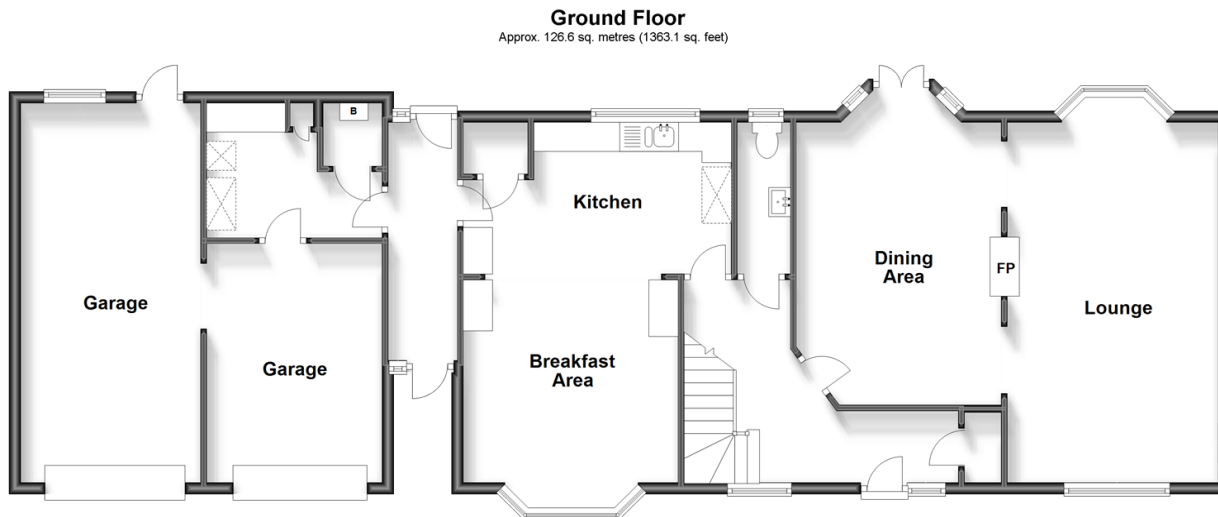
Dining Area: 18'1 x 11'5 (5.52m x 3.48m)

Cloakroom

Breakfast Area : 12'9 x 11'9 (3.89m x 3.58m)

Kitchen : 15'0 x 8'7 (4.58m x 2.62m)

Utility Room : 7'6 x 7'0 (2.29m x 2.14m)



FIRST FLOOR

Landing

Bedroom 1: 12'7 x 10'9 (3.84m x 3.28m)

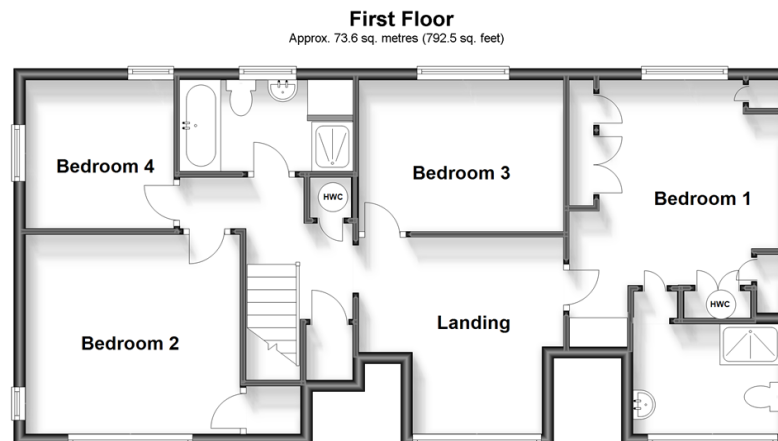
En-suite Shower Room

Bedroom 2: 11'9 x 11'0 (3.58m x 3.36m)

Bedroom 3: 11'4 x 9'0 (3.46m x 2.75m)

Bedroom 4: 8'7 x 8'4 (2.62m x 2.54m)

Bathroom



OUTSIDE

Front Garden

Driveway

Double Garage

Rear Garden



Main features

- Rarely available home situated in a popular village
- Large wraparound garden
- Extended living and bedroom space
- Large double garage
- Walking distance of village pub and countryside walks
- Short walk away from the popular Shorne Country Park



Nearest Schools

Primary Schools: Shorne C of E Voluntary Controlled Primary 0.6 miles, Higham Primary 1.5 miles

Secondary Schools: Gad's Hill School 0.8 miles, Strood Academy 1.3 miles, Cobham Hall 1.6 miles



Transport Information

Train Stations: Higham 1.6 miles, Cuxton 2.4 miles, Strood 2.7 miles



Address

Pear Tree Lane, Shorne, Gravesend, Kent, DA12



Directions

For directions to this property please contact us.



Call Gravesend Branch 01474 352417 ■ wardsofkent.co.uk



- Legal advice should be taken to verify fixtures/fittings, planning, alterations and/or lease details
- Appliances & services are untested, dimensions are approximate and floor plans are not to scale
- Through a Homewise Home For Life Plan people aged 60+ can secure this property for up to 59% less, by purchasing a Lifetime Lease.



11139573/20231106/MM/NO