



**Price**  
**£535,000**

**Freehold**

2x  1x  1x 

**Green Farm Lane,  
Shorne, Gravesend,  
Kent, DA12**

**OVER 60?**

Secure this property  
for up to **59% less!**

*Wards*  
Helping you move forwards





## Main features

- Beautifully decorated bungalow
- Situated in the quiet and picturesque village of Shorne
- Spacious conservatory
- Gorgeous rear garden backing onto fields
- Walking distance of shops, bus stop and pretty country walks

## Accommodation

### GROUND FLOOR

Entrance Hall

Lounge : 18'7 x 11'6 (5.67m x 3.51m)

Kitchen/Diner: 13'4 x 9'9 (4.07m x 2.97m)

Conservatory : 21'2 x 10'1 (6.46m x 3.08m)

Bedroom 1: 11'7 x 10'9 (3.53m x 3.28m)

Bedroom 2: 11'9 x 9'9 (3.58m x 2.97m)

Bathroom

### OUTSIDE

Front Garden

Garage

Driveway

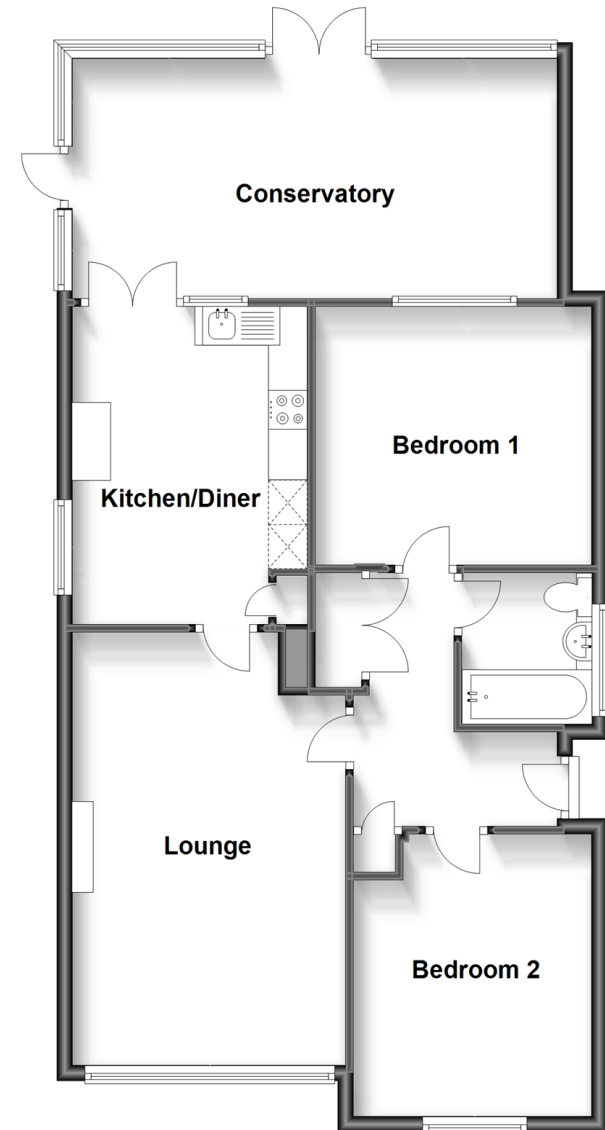
Rear Garden

**Call Gravesend - 01474 352417 ■ [wardsofkent.co.uk](http://wardsofkent.co.uk)**

- Legal advice should be taken to verify fixtures/fittings, planning, alterations and/or lease details
- Appliances & services are untested, dimensions are approximate and floor plans are not to scale
- Through a Homewise Home For Life Plan people aged 60+ can secure this property for up to 59% less, by purchasing a Lifetime Lease.

## Ground Floor

Approx. 87.0 sq. metres (936.1 sq. feet)



11139595/20230509/NO/NO