



**OVER 60?**

Secure this property  
for up to **59% less!**

**Price**

**£385,000**

**Freehold**

3x  2x  1x 

**Fleet Road, Northfleet,  
Gravesend, Kent, DA11**

*Wards*  
Helping you move forwards



## Main features

- Stunning home located in the sort after Pepper Hill area
- Beautiful kitchen/diner leading into the conservatory
- Downstairs cloakroom
- Walking distance to shops and schools
- Ideally located

## Accommodation

### GROUND FLOOR

Entrance Hall  
 Lounge : 23'5 x 12'3 (7.14m x 3.74m)  
 Dining Area: 9'7 x 8'1 (2.92m x 2.47m)  
 Cloakroom  
 Kitchen : 12'1 x 10'9 (3.69m x 3.28m)  
 Conservatory : 10'4 x 9'7 (3.15m x 2.92m)

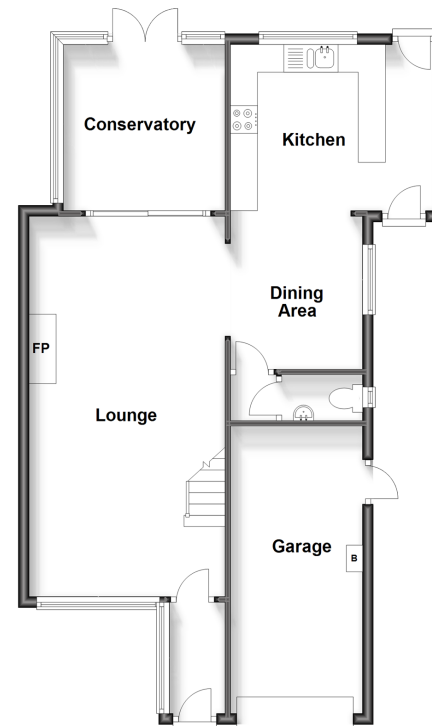
### FIRST FLOOR

Landing  
 Bedroom 1: 14'8 x 11'11 (4.47m x 3.63m)  
 Bedroom 2: 11'8 x 7'8 (3.56m x 2.34m)  
 Bedroom 3: 11'10 x 8'3 (3.61m x 2.52m)  
 Bathroom : 7'7 x 6'2 (2.31m x 1.88m)

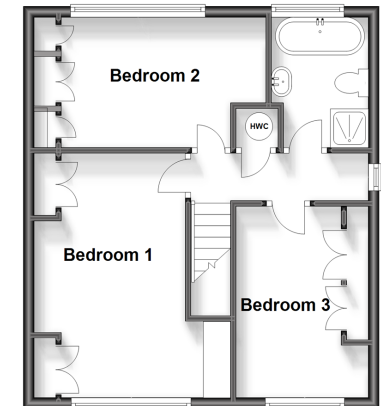
### OUTSIDE

Front Garden  
 Driveway  
 Integral Garage  
 Rear Garden

**Ground Floor**  
 Approx. 70.9 sq. metres (763.5 sq. feet)



**First Floor**  
 Approx. 42.2 sq. metres (454.4 sq. feet)



**Call Gravesend - 01474 352417 ■ [wardsofkent.co.uk](http://wardsofkent.co.uk)**

■ Legal advice should be taken to verify fixtures/fittings, planning, alterations and/or lease details  
 ■ Through a Homewise Home For Life Plan people aged 60+ can secure this property for up to 59% less, by purchasing a Lifetime Lease.

■ Appliances & services are untested, dimensions are approximate and floor plans are not to scale