



OVER 60?

Secure this property
for up to **59% less!**

Price

£210,000

Leasehold

2x  1x  1x 

**Melbourne Quays, West
Street, Gravesend, Kent,
DA11**

Wards
Helping you move forwards



Main features

- Second floor apartment with lift access
- Situated in the Melbourne Quays complex
- Open plan lounge/dining area
- 1 allocated secure parking space
- Lovely views out over the River Thames
- No forward chain

Accommodation

SECOND FLOOR

Entrance Hall

Lounge: 18'4 x 10'7 (5.59m x 3.23m)

Kitchen : 8'4 x 7'8 (2.54m x 2.34m)

Bathroom

Bedroom 1: 10'5 x 9'8 (3.18m x 2.95m)

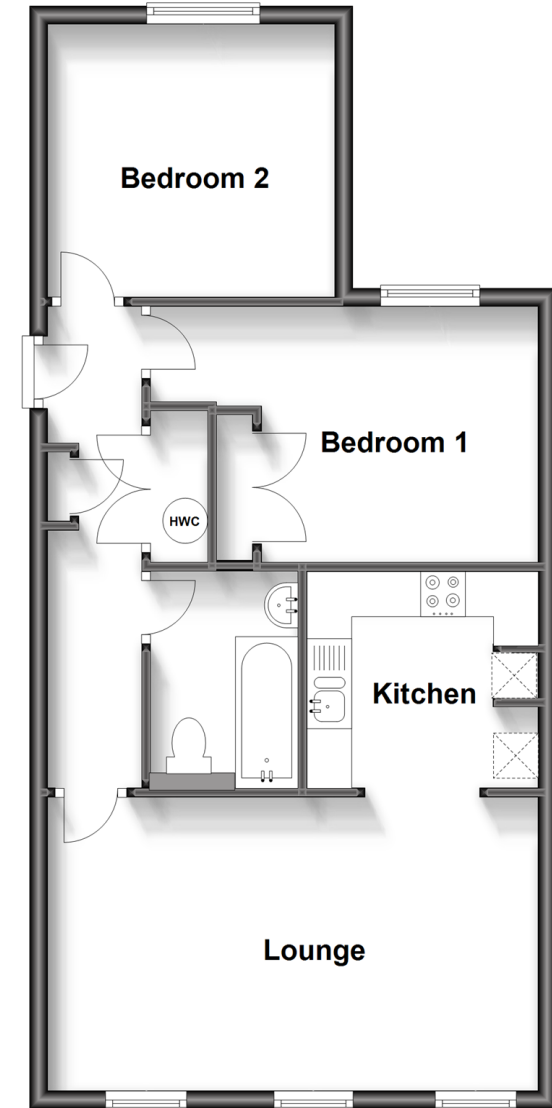
Bedroom 2: 9'2 x 9'1 (2.80m x 2.77m)

OUTSIDE

Allocated Parking Space

Second Floor

Approx. 57.8 sq. metres (621.8 sq. feet)



Call Gravesend - 01474 352417 ■ wardsof Kent.co.uk

- Legal advice should be taken to verify fixtures/fittings, planning, alterations and/or lease details
- Appliances & services are untested, dimensions are approximate and floor plans are not to scale
- Through a Homewise Home For Life Plan people aged 60+ can secure this property for up to 59% less, by purchasing a Lifetime Lease.



11139605/20240308/JC/NO