



**OVER 60?**

Secure this property  
for up to **59% less!**

**Price**

**£85,000**

**Leasehold**

1x  1x  1x 

**Nelson Court, Glen  
View, Gravesend, Kent,  
DA12**

*Wards*  
Helping you move forwards





## Main features

- Chain free ground floor retirement flat with direct access to communal gardens
- Spacious lounge/diner
- Communal lounge, restaurant and laundry room
- Estate manager available 24 hours a day
- Security cameras and emergency call system

## Accommodation

### GROUND FLOOR

Entrance Hall

Lounge/Diner: 15'0 x 10'7 (4.58m x 3.23m)

Kitchen : 9'5 x 7'1 (2.87m x 2.16m)

Bedroom : 12'10 x 10'1 (3.91m x 3.08m)

Bathroom : 8'2 x 6'8 (2.49m x 2.03m)

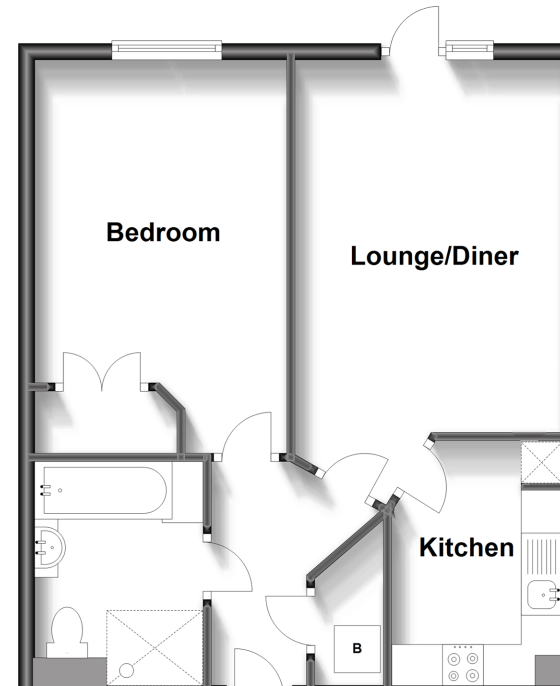
### OUTSIDE

Communal Gardens

Off Road Parking

### Ground Floor

Approx. 49.1 sq. metres (528.2 sq. feet)



**Call Gravesend - 01474 352417 ■ wardsofkent.co.uk**

■ Legal advice should be taken to verify fixtures/fittings, planning, alterations and/or lease details  
 ■ Through a Homewise Home For Life Plan people aged 60+ can secure this property for up to 59% less, by purchasing a Lifetime Lease.

■ Appliances & services are untested, dimensions are approximate and floor plans are not to scale



11139632/20240219/AH/LK