



**Price**

**£112,500**

**Leasehold**

1x  1x  1x 

**Nave Square, Hillier  
Crescent, Gravesend,  
Kent, DA11**

*Wards*  
Helping you move forwards





## Main features

- A beautifully presented top floor apartment
- 50% shared ownership
- Allocated and visitor parking
- Open plan lounge/kitchen
- Within walking distance of Gravesend railway station

## Accommodation

### THIRD FLOOR

Entrance Hall

Lounge/Kitchen : 22'9 x 12'8 (6.94m x 3.86m)

Balcony

Bedroom : 14'3 x 10'4 (4.35m x 3.15m)

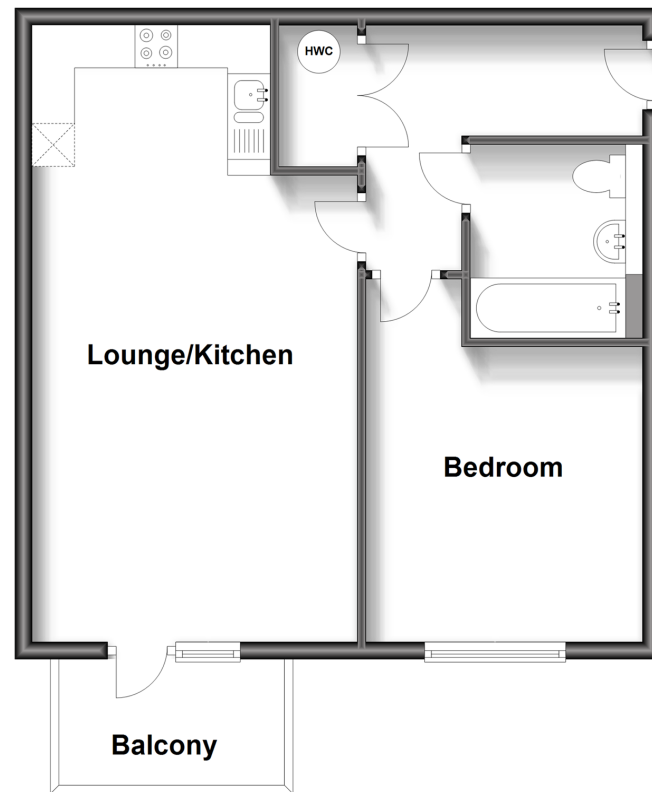
Bathroom

### OUTSIDE

Allocated Parking Space

### Third Floor

Approx. 51.6 sq. metres (554.9 sq. feet)



**Call Gravesend - 01474 352417 ■ [wardsof Kent.co.uk](http://wardsof Kent.co.uk)**

- Legal advice should be taken to verify fixtures/fittings, planning, alterations and/or lease details
- Appliances & services are untested, dimensions are approximate and floor plans are not to scale