



Price
£450,000

Freehold

3x  1x  2x 

**"Ridgeways", Wrotham
Road, Gravesend, Kent,
DA11**

OVER 60?

Secure this property
for up to **59% less!**

Wards
Helping you move forwards



Main features

- Offered for sale with no forward chain
- Driveway to the front providing off road parking for several vehicles
- Spacious rear garden
- Situated in a sought after location
- Superb potential to extend subject to planning permission

Accommodation

GROUND FLOOR

Entrance Porch
Entrance Hall
Lounge : 16'4 x 12'5 (4.98m x 3.79m)
Dining Room : 13'8 x 9'4 (4.17m x 2.85m)
Kitchen : 9'11 x 8'2 (3.02m x 2.49m)

FIRST FLOOR

Landing
Bedroom 1: 13'2 x 9'2 up to fitted wardrobes (4.02m x 2.80m)
Bedroom 2: 12'10 x 11'4 (3.91m x 3.46m)
Bedroom 3: 8'8 x 7'1 (2.64m x 2.16m)
Bathroom

OUTBUILDING

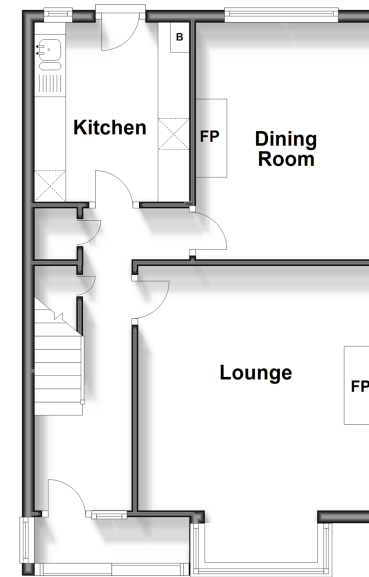
Former Air Raid Shelter

OUTSIDE

Front Garden
Driveway
Rear Garden

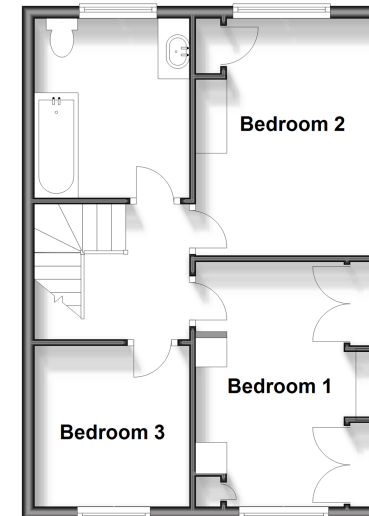
Ground Floor

Approx. 45.4 sq. metres (488.2 sq. feet)



First Floor

Approx. 42.5 sq. metres (457.9 sq. feet)



Outbuilding

Approx. 3.9 sq. metres (42.2 sq. feet)



Call Gravesend - 01474 352417 ■ wardsof Kent.co.uk

- Legal advice should be taken to verify fixtures/fittings, planning, alterations and/or lease details
- Appliances & services are untested, dimensions are approximate and floor plans are not to scale
- Through a Homewise Home For Life Plan people aged 60+ can secure this property for up to 59% less, by purchasing a Lifetime Lease.



11139646/20240426/AH/AH