



Price
£320,000

Freehold

3x  1x  1x 

**Freeman Road,
Gravesend, Kent, DA12**

OVER 60?

Secure this property
for up to **59% less!**

Wards
Helping you move forwards



Main features

- Ideal family home close to local amenities
- Open plan kitchen/diner
- Off road parking for several vehicles
- Spacious rear garden
- Only a short drive to the A2 motorway and Gravesend high-speed station

Accommodation

GROUND FLOOR

Entrance Porch

Lounge: 17'5 x 10'11 (5.31m x 3.33m)

Kitchen/Diner : 20'9 x 11'1 (6.33m x 3.38m)

FIRST FLOOR

Landing

Bedroom 1: 14'7 x 11'5 (4.45m x 3.48m)

Bedroom 2: 11'7 x 10'4 (3.53m x 3.15m)

Bedroom 3: 10'1 x 8'5 (3.08m x 2.57m)

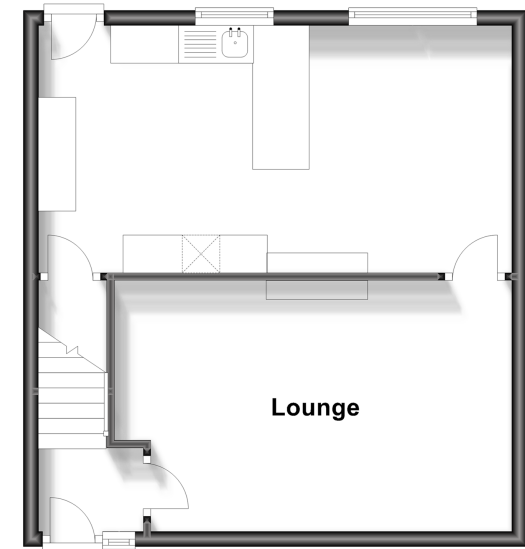
OUTSIDE

Driveway

Rear Garden

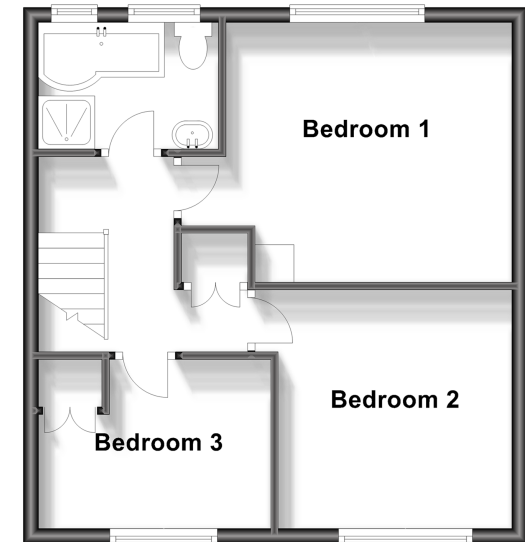
Ground Floor

Approx. 42.2 sq. metres (454.5 sq. feet)



First Floor

Approx. 42.2 sq. metres (454.5 sq. feet)



Call Gravesend - 01474 352417 ■ wardsof Kent.co.uk

- Legal advice should be taken to verify fixtures/fittings, planning, alterations and/or lease details
- Appliances & services are untested, dimensions are approximate and floor plans are not to scale
- Through a Homewise Home For Life Plan people aged 60+ can secure this property for up to 59% less, by purchasing a Lifetime Lease.



11139692/20230902/MM/SB