



**Price**

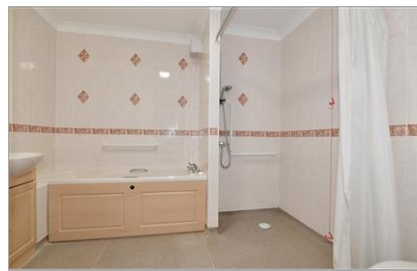
**£175,000**

**Leasehold**

2x  1x  1x 

**Nelson Court, Glen  
View, Gravesend, Kent,  
DA12**

*Wards*  
Helping you move forwards



## Main features

- Chain free retirement apartment for the over 60s
- Communal car parking, gardens, lounge and restaurant
- Estate manager available 24 hours a day
- Laundry room and domestic help
- Popular McCarthy Stone development

## Accommodation

### FIRST FLOOR

Entrance Hall

Lounge : 18'8 x 10'9 (5.69m x 3.28m)

Kitchen : 7'8 x 7'7 (2.34m x 2.31m)

Bedroom 1 : 14'4 x 9'10 (4.37m x 3.00m)

Bathroom: 9'5 x 8'10 (2.87m x 2.69m)

Bedroom 2: 13'6 x 10'1 (4.12m x 3.08m)

### OUTSIDE

Communal Parking

Communal Garden

### First Floor

Approx. 66.8 sq. metres (719.4 sq. feet)



**Call Gravesend - 01474 352417 ■ [wardsofkent.co.uk](http://wardsofkent.co.uk)**

■ Legal advice should be taken to verify fixtures/fittings, planning, alterations and/or lease details

■ Appliances & services are untested, dimensions are approximate and floor plans are not to scale



11139711/20240212/MM/LK