



OVER 60?

Secure this property
for up to **59% less!**

Price

£260,000

Freehold

2x  1x  2x 

**Wilfred Street,
Gravesend, Kent, DA12**

Wards
Helping you move forwards



Main features

- Offered for sale with no forward chain
- Downstairs bathroom
- Separate lounge and dining room
- Within walking distance of Gravesend High Street
- Ideal for buy-to-let investors, tenant in situ

Accommodation

SPLIT LEVEL GROUND FLOOR

Entrance Hall

Dining Room : 13'10 x 9'11 (4.22m x 3.02m)

Lounge: 14'0 x 9'8 (4.27m x 2.95m)

Kitchen : 9'4 x 6'5 (2.85m x 1.96m)

Bathroom

FIRST FLOOR

Bedroom 1: 13'10 x 9'11 (4.22m x 3.02m)

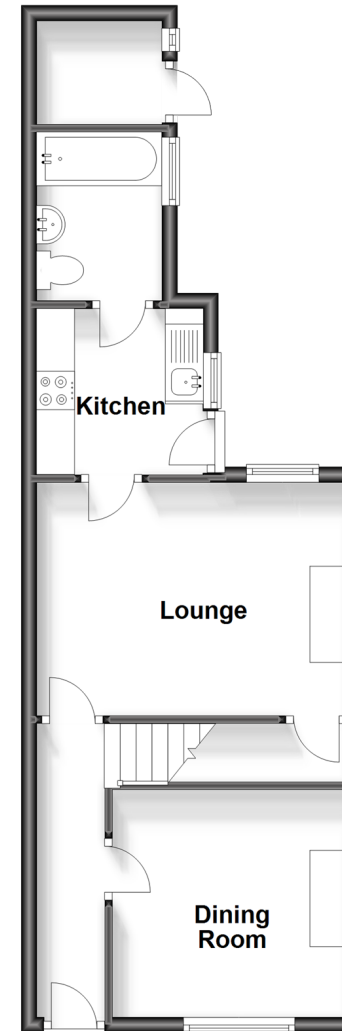
Bedroom 2: 14'3 x 9'10 (4.35m x 3.00m)

OUTSIDE

Rear Garden

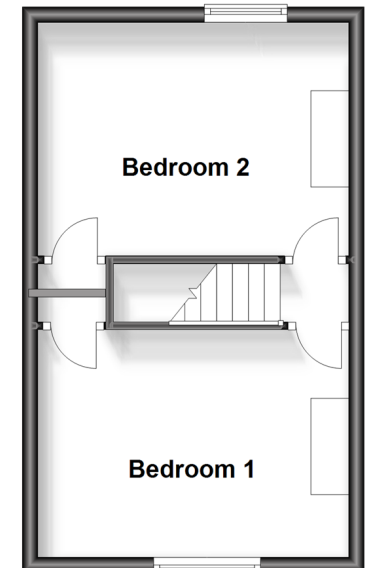
Split Level Ground Floor

Approx. 39.6 sq. metres (425.8 sq. feet)



First Floor

Approx. 28.5 sq. metres (306.2 sq. feet)



Call Gravesend - 01474 352417 ■ wardsof Kent.co.uk

- Legal advice should be taken to verify fixtures/fittings, planning, alterations and/or lease details
- Appliances & services are untested, dimensions are approximate and floor plans are not to scale
- Through a Homewise Home For Life Plan people aged 60+ can secure this property for up to 59% less, by purchasing a Lifetime Lease.



11139721/20230918/MM/NO