



Price
£725,000

Freehold

4x  2x  3x 

**Hermitage Road,
Higham, Rochester,
Kent, ME3**

Wards
Helping you move forwards



Main features

- Beautiful spacious period home with stunning views of the River Thames
- 4 generous double bedrooms
- En-suite shower room, bathroom and downstairs cloakroom
- Superb period features including gallery landing, oak balustrade and bay windows
- Within walking distance to local amenities and the renowned Gads Hill School

Accommodation

SPLIT LEVEL GROUND FLOOR

Entrance Hall
Dining Room : 15'8 into bay x 12'3 (4.78m x 3.74m)
Kitchen: 12'3 x 9'8 (3.74m x 2.95m)
Cloakroom
Family Room : 14'6 x 13'6 (4.42m x 4.12m)
Lounge : 27'5 into bay x 11'9 (8.36m x 3.58m)

BASEMENT

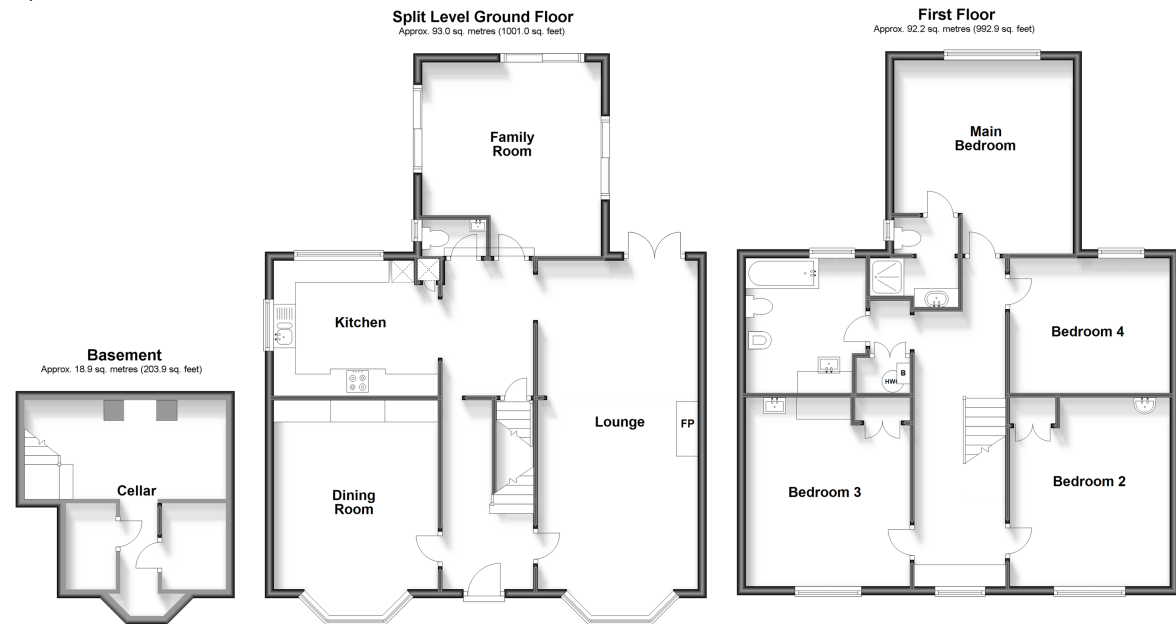
Cellar

FIRST FLOOR

Landing
Bedroom 3: 12'11 x 12'7 (3.94m x 3.84m)
Bathroom
Main Bedroom : 14'7 x 13'8 (4.45m x 4.17m)
En-suite Shower Room
Bedroom 4: 12'0 x 10'0 (3.66m x 3.05m)
Bedroom 2: 13'9 x 12'5 (4.19m x 3.79m)

OUTSIDE

Front Garden
Driveway
Double Garage/Workshop



Call Gravesend - 01474 352417 ■ wardsof Kent.co.uk

■ Legal advice should be taken to verify fixtures/fittings, planning, alterations and/or lease details

■ Appliances & services are untested, dimensions are approximate and floor plans are not to scale



11139756/20231116/AH/NO