



Price

£850,000

Freehold

3x  3x  1x 

**Green Farm Lane,
Shorne, Gravesend,
Kent, DA12**

OVER 60?

Secure this property
for up to **59% less!**

Wards
Helping you move forwards



Main features

- Beautiful extended bungalow
- Large open plan living space
- Recently updated throughout
- Summerhouse that can be used as a home office
- Rural setting with countryside walks
- Planning permission for 1st floor extension creating 3 bedrooms and a bathroom

Accommodation

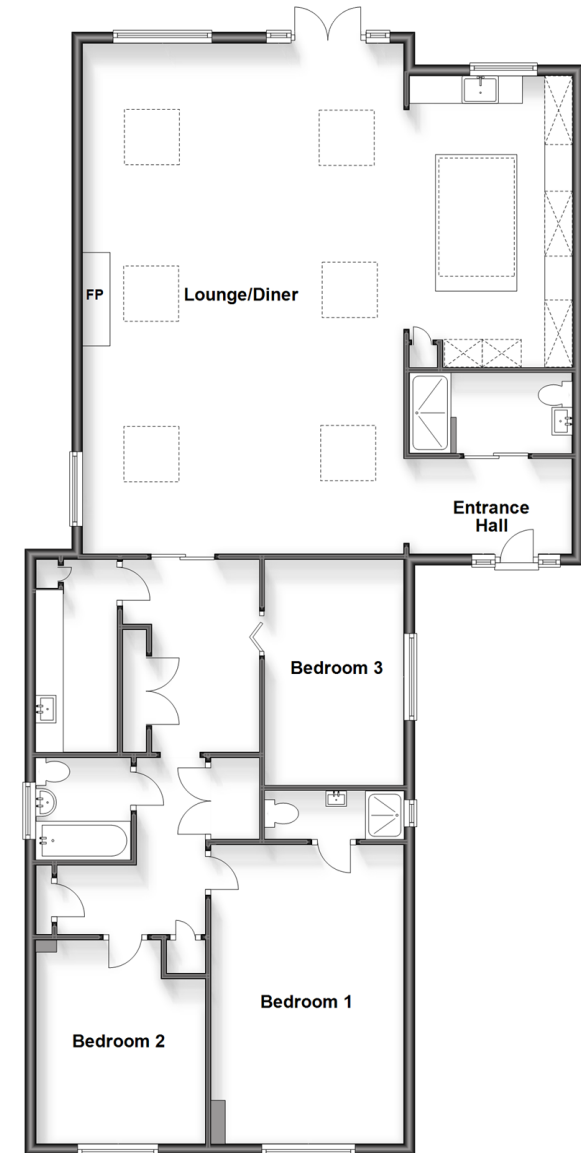
GROUND FLOOR

Entrance Hall
 Shower Room
 Lounge/Diner : 30'0 x 18'2 (9.15m x 5.54m)
 Kitchen : 14'2 x 9'9 (4.32m x 2.97m)
 Inner Hallway
 Utility Room
 Bathroom
 Bedroom 2: 13'4 x 9'9 (4.07m x 2.97m)
 Bedroom 1: 17'2 x 9'5 (5.24m x 2.87m)
 En-Suite Shower Room
 Bedroom 3: 11'8 x 7'9 (3.56m x 2.36m)

OUTSIDE

Driveway
 Rear Garden
 Summerhouse

Ground Floor
 Approx. 151.7 sq. metres (1632.8 sq. feet)



Call Gravesend - 01474 352417 ■ wardsof Kent.co.uk

- Legal advice should be taken to verify fixtures/fittings, planning, alterations and/or lease details
- Appliances & services are untested, dimensions are approximate and floor plans are not to scale
- Through a Homewise Home For Life Plan people aged 60+ can secure this property for up to 59% less, by purchasing a Lifetime Lease.



11139782/20231018/MM/NO