



OVER 60?

Secure this property
for up to **59% less!**

Guide Price
£325,000

Freehold

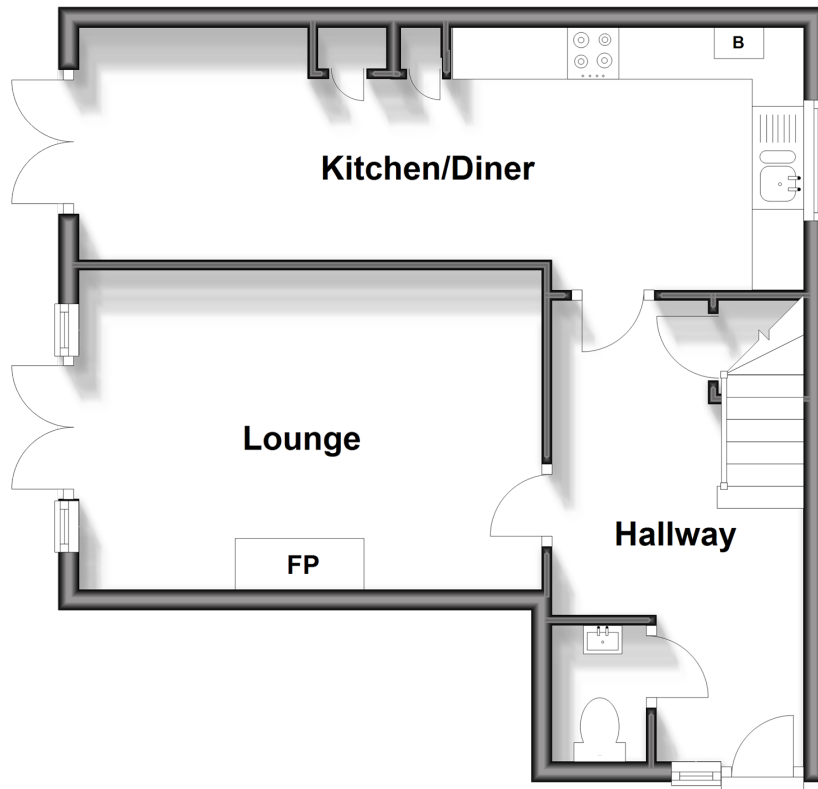
2x  1x  1x 

**Victoria Mews, Cliffe,
Rochester, Kent, ME3**

Wards
Helping you move forwards

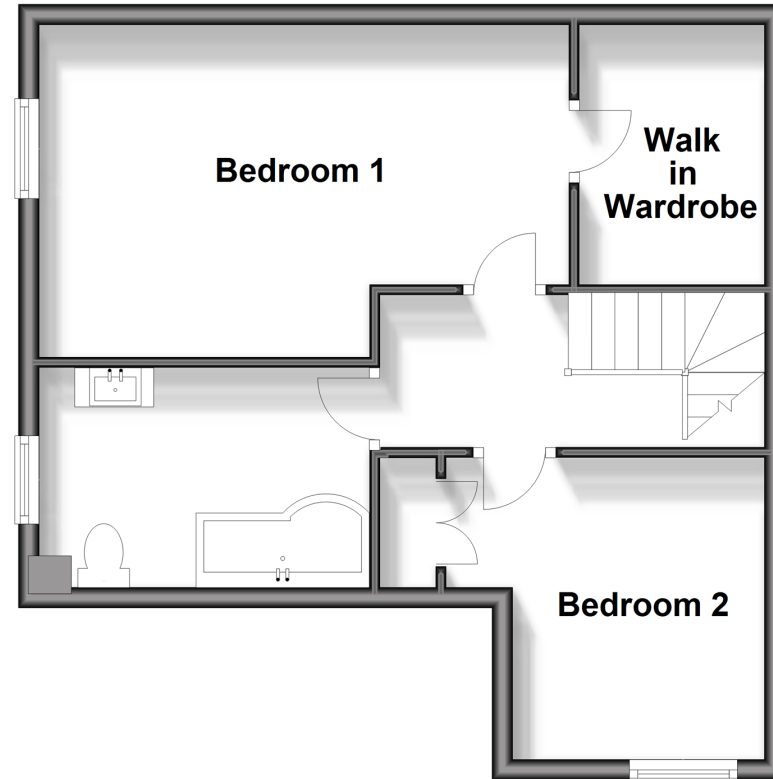
Ground Floor

Approx. 42.5 sq. metres (457.3 sq. feet)



First Floor

Approx. 42.5 sq. metres (457.3 sq. feet)



Accommodation

GROUND FLOOR

Entrance Hall
Cloakroom
Lounge : 14'7 x 10'1 (4.45m x 3.08m)
Kitchen/Diner : 23'4 x 8'2 (7.12m x 2.49m)

FIRST FLOOR

Landing
Bedroom 1: 16'7 x 10'4 (5.06m x 3.15m)
Walk-In Wardrobe: 8'3 x 6'0 (2.52m x 1.83m)
Bedroom 2: 11'6 x 9'5 (3.51m x 2.87m)
Bathroom : 8'7 x 6'8 (2.62m x 2.03m)

OUTSIDE

Driveway
Side Access
Rear Garden



Main features

- Sought after village location
- Driveway to the side plus additional parking space
- Private road with a secluded garden and no overlooking properties
- Side access with ample storage down the side
- Catchment area of local top performing schools and the local St Helens Primary close by
- Enjoy countryside walks out to Cliffe marshes



Nearest Schools

Primary Schools: St Helen's C of E Primary, Cliffe, Cliffe Woods Primary, High Halstow Primary
Secondary Schools: The Hundred of Hoo Comprehensive School



Transport Information

Train Stations: Higham 2.8 miles, Strood 4.6 miles



Address

Victoria Mews, Cliffe, Rochester, Kent, ME3



Directions

For directions to this property please contact us.



Wards
Helping you move forwards

Call Strood Branch 01634 716597 ■ wardsofkent.co.uk



■ Legal advice should be taken to verify fixtures/fittings, planning, alterations and/or lease details ■ Appliances & services are untested, dimensions are approximate and floor plans are not to scale
■ Through a Homewise Home For Life Plan people aged 60+ can secure this property for up to 59% less, by purchasing a Lifetime Lease.



11139831/20231222/DV/DM