



**OVER 60?**

Secure this property  
for up to **59% less!**

**Price**

**£230,000**

**Leasehold**

2x  1x  1x 

**Janda Court, Portland  
Road, Gravesend, Kent,  
DA12**

*Wards*  
Helping you move forwards





## Main features

- Second floor apartment
- Spacious lounge
- Garage providing handy private parking
- Stunning communal garden
- Within walking distance of shops and Gravesend railway station

## Accommodation

### SECOND FLOOR

Entrance Hall

Lounge : 18'7 x 15'7 (5.67m x 4.75m)

Kitchen : 13'0 x 9'1 (3.97m x 2.77m)

Toilet

Shower Room : 9'1 x 6'2 (2.77m x 1.88m)

Bedroom 1: 15'0 x 9'4 (4.58m x 2.85m)

Bedroom 2 : 10'2 x 8'9 (3.10m x 2.67m)

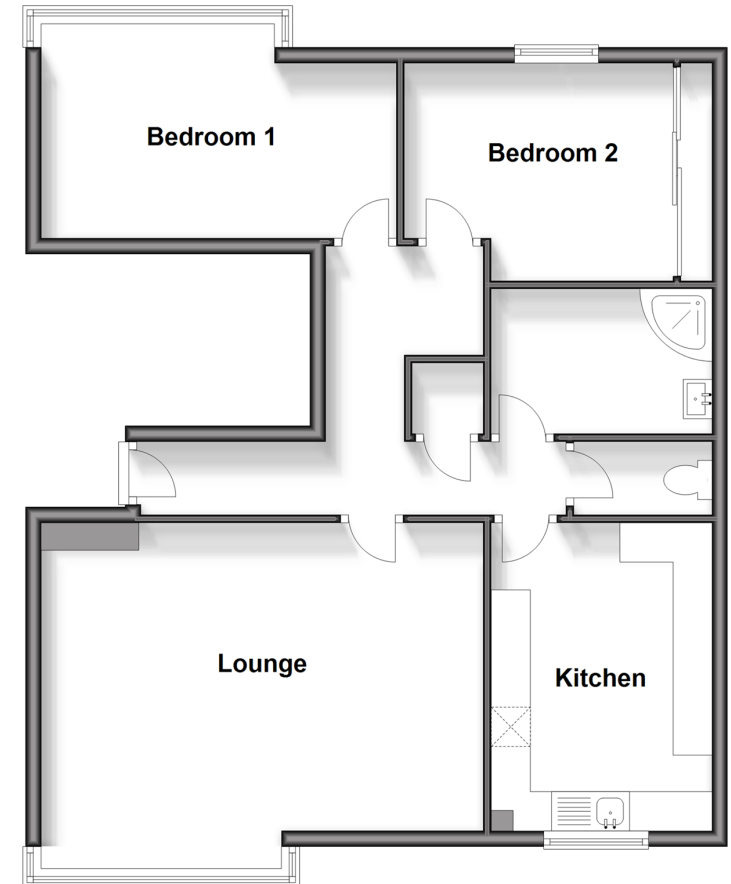
### OUTSIDE

Underground Parking Space

Communal Garden

### Second Floor

Approx. 74.8 sq. metres (805.5 sq. feet)



**Call Gravesend - 01474 352417 ■ [wardsofkent.co.uk](http://wardsofkent.co.uk)**

- Legal advice should be taken to verify fixtures/fittings, planning, alterations and/or lease details
- Appliances & services are untested, dimensions are approximate and floor plans are not to scale
- Through a Homewise Home For Life Plan people aged 60+ can secure this property for up to 59% less, by purchasing a Lifetime Lease.



11139840/20231114/MM/NO