



**OVER 60?**

Secure this property  
for up to **59% less!**

**Price**  
**£305,000**

**Freehold**

3x  1x  1x 

**All Saints Road,  
Northfleet, Gravesend,  
Kent, DA11**

*Wards*  
Helping you move forwards



## Main features

- Family home situated in a popular road
- Downstairs bathroom
- Open plan lounge/diner
- Bay fronted period features
- Walking distance of local shops and schools.

## Accommodation

### GROUND FLOOR

Entrance Porch  
 Entrance Hall  
 Lounge/Diner : 25'6 x 12'2 at widest point (7.78m x 3.71m)  
 Kitchen : 11'11 x 7'5 (3.63m x 2.26m)  
 Bathroom

### FIRST FLOOR

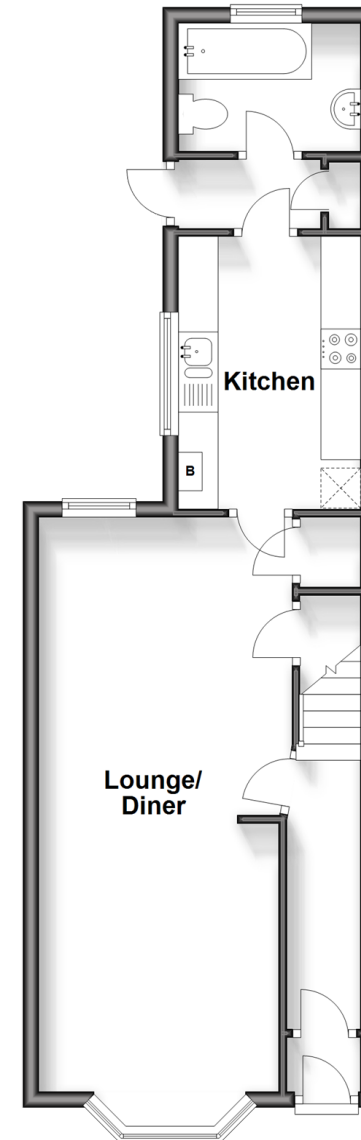
Landing  
 Bedroom 1: 13'3 x 10'8 (4.04m x 3.25m)  
 Bedroom 2: 12'3 x 9'0 (3.74m x 2.75m)  
 Bedroom 3: 11'1 x 7'6 (3.38m x 2.29m)

### OUTSIDE

Front Garden  
 Rear Garden

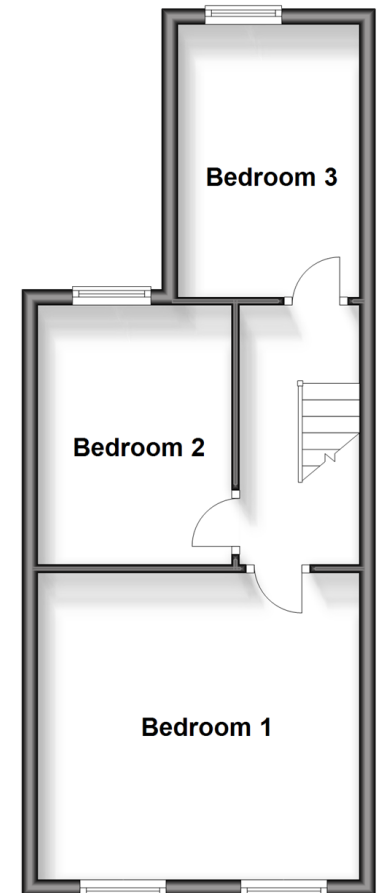
## Ground Floor

Approx. 43.5 sq. metres (468.6 sq. feet)



## First Floor

Approx. 37.2 sq. metres (400.3 sq. feet)



**Call Gravesend - 01474 352417 ■ [wardsofkent.co.uk](http://wardsofkent.co.uk)**

- Legal advice should be taken to verify fixtures/fittings, planning, alterations and/or lease details
- Appliances & services are untested, dimensions are approximate and floor plans are not to scale
- Through a Homewise Home For Life Plan people aged 60+ can secure this property for up to 59% less, by purchasing a Lifetime Lease.



11139849/20240413/MM/NO