



Price
£385,000

Freehold

3x  1x  1x 

**St. Gregory's Crescent,
Gravesend, Kent, DA12**

OVER 60?

Secure this property
for up to **59% less!**

Wards
Helping you move forwards



Main features

- A wonderfully presented family home
- Lounge and separate kitchen/diner
- Beautifully maintained rear garden
- Within walking distance to shops and schools
- Short drive away from the A2/M2 motorway network

Accommodation

GROUND FLOOR

Entrance Porch

Lounge: 18'9 x 11'5 (5.72m x 3.48m)

Kitchen/Diner: 18'1 x 11'4 (5.52m x 3.46m)

FIRST FLOOR

Landing

Bedroom 1: 12'1 x 11'8 (3.69m x 3.56m)

Bedroom 2: 12'1 x 8'1 (3.69m x 2.47m)

Bedroom 3: 9'0 x 7'10 (2.75m x 2.39m)

Bathroom

Toilet

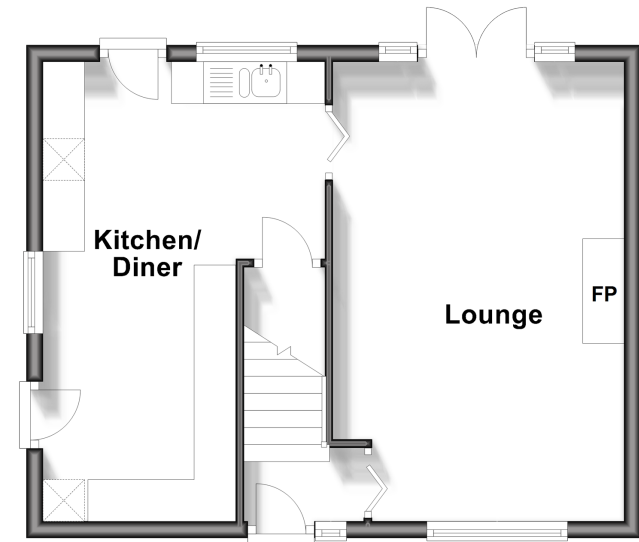
OUTSIDE

Driveway

Rear Garden

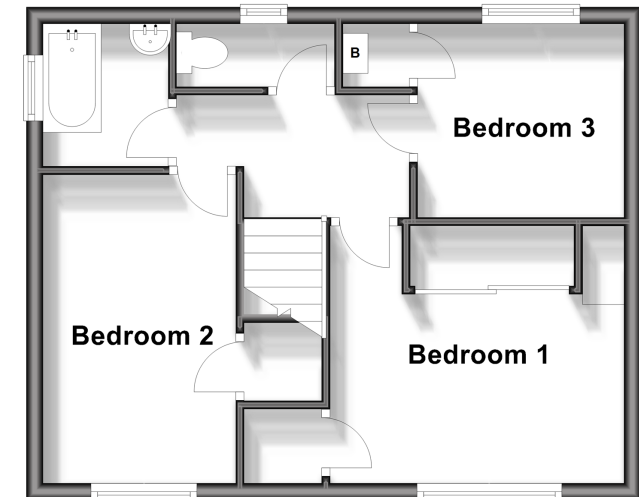
Ground Floor

Approx. 38.4 sq. metres (413.5 sq. feet)



First Floor

Approx. 38.4 sq. metres (413.5 sq. feet)



Call Gravesend - 01474 352417 ■ wardsof Kent.co.uk

- Legal advice should be taken to verify fixtures/fittings, planning, alterations and/or lease details
- Appliances & services are untested, dimensions are approximate and floor plans are not to scale
- Through a Homewise Home For Life Plan people aged 60+ can secure this property for up to 59% less, by purchasing a Lifetime Lease.



11139878/20231218/MM/SB