



Price

£410,000

Freehold

3x  1x  2x 

**Harris Close, Northfleet,
Gravesend, Kent, DA11**

OVER 60?

Secure this property
for up to **59% less!**

Wards
Helping you move forwards



Main features

- A fantastic sized bungalow in a sought after location
- Versatile layout
- Garage and driveway
- Within easy reach of shops and motorway networks
- Offered for sale with no forward chain

Accommodation

GROUND FLOOR

Entrance Porch
 Entrance Hall
 Kitchen : 11'2 x 7'10 (3.41m x 2.39m)
 Lounge : 15'11 x 11'11 (4.85m x 3.63m)
 Bedroom 3: 14'9 up to fitted wardrobes x 8'11 (4.50m x 2.72m)
 Dining Room : 10'9 x 8'1 (3.28m x 2.47m)
 Bathroom

FIRST FLOOR

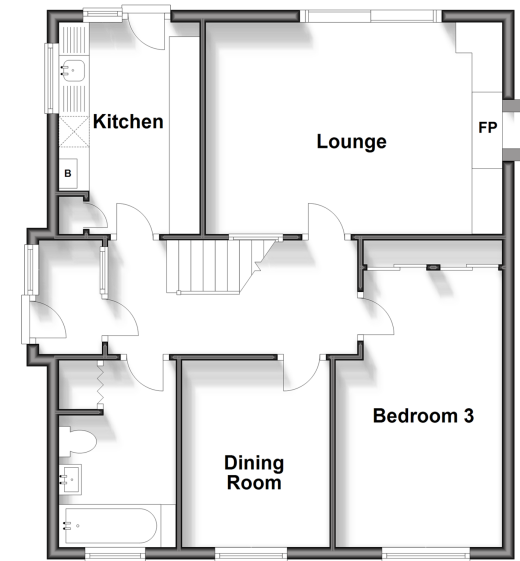
Landing
 Bedroom 1: 13'10 up to fitted wardrobes x 11'4 (4.22m x 3.46m)
 Bedroom 2: 14'0 x 10'10 (4.27m x 3.30m)
 Cloakroom

OUTSIDE

Front Garden
 Driveway
 Garage
 Rear Garden

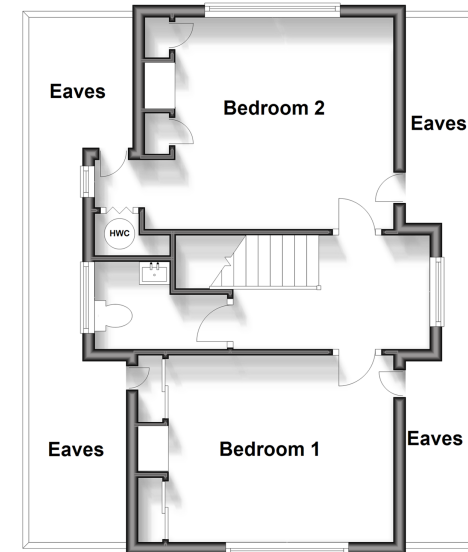
Ground Floor

Approx. 63.3 sq. metres (680.9 sq. feet)



First Floor

Approx. 39.2 sq. metres (421.8 sq. feet)



Call Gravesend - 01474 352417 ■ wardsofkent.co.uk

- Legal advice should be taken to verify fixtures/fittings, planning, alterations and/or lease details
- Appliances & services are untested, dimensions are approximate and floor plans are not to scale
- Through a Homewise Home For Life Plan people aged 60+ can secure this property for up to 59% less, by purchasing a Lifetime Lease.



11139915/20240420/MM/SB