



OVER 60?

Secure this property
for up to **59% less!**

Price

£375,000

Freehold

3x  2x  1x 

**Field Lane, Gravesend,
Kent, DA11**

Wards
Helping you move forwards



Main features

- Situated in a popular new development
- Open plan kitchen/diner
- Handy en-suite shower room to the main bedroom
- Off road parking for 2 vehicles
- Close by to shops and schools

Accommodation

GROUND FLOOR

Entrance Hall
Cloakroom
Lounge : 14'6 x 12'1 (4.42m x 3.69m)
Kitchen/Diner : 14'4 x 9'6 (4.37m x 2.90m)

FIRST FLOOR

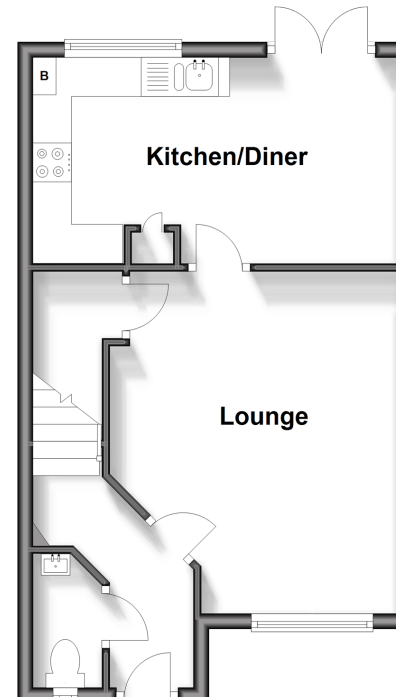
Landing
Bedroom 1: 11'9 x 9'8 (3.58m x 2.95m)
En-suite Shower Room
Bedroom 2: 9'2 x 7'6 (2.80m x 2.29m)
Bedroom 3: 7'7 x 5'9 (2.31m x 1.75m)
Bathroom

OUTSIDE

Front Garden
Rear Garden
Off Road Parking

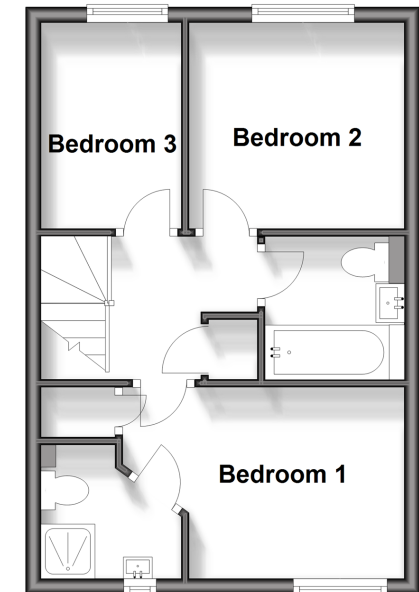
Ground Floor

Approx. 35.6 sq. metres (383.2 sq. feet)



First Floor

Approx. 33.6 sq. metres (361.9 sq. feet)



Call Gravesend - 01474 352417 ■ wardsofkent.co.uk

■ Legal advice should be taken to verify fixtures/fittings, planning, alterations and/or lease details
■ Through a Homewise Home For Life Plan people aged 60+ can secure this property for up to 59% less, by purchasing a Lifetime Lease.

■ Appliances & services are untested, dimensions are approximate and floor plans are not to scale



11139936/20240330/NO/NO