



OVER 60?

Secure this property
for up to **59% less!**

Price

£120,000

Leasehold

1x  1x  1x 

**Haig Gardens,
Gravesend, Kent, DA12**

Wards
Helping you move forwards



Main features

- **Fantastic purchase for first time buyers or investors**
- **Allocated parking space**
- **Close proximity to Gravesend town centre**
- **Within walking distance of Gravesend train station**
- **Offered for sale with no forward chain**

Accommodation

FIRST FLOOR

Living Area : 15'7 x 11'6 (4.75m x 3.51m)

Kitchen : 7'1 x 6'3 (2.16m x 1.91m)

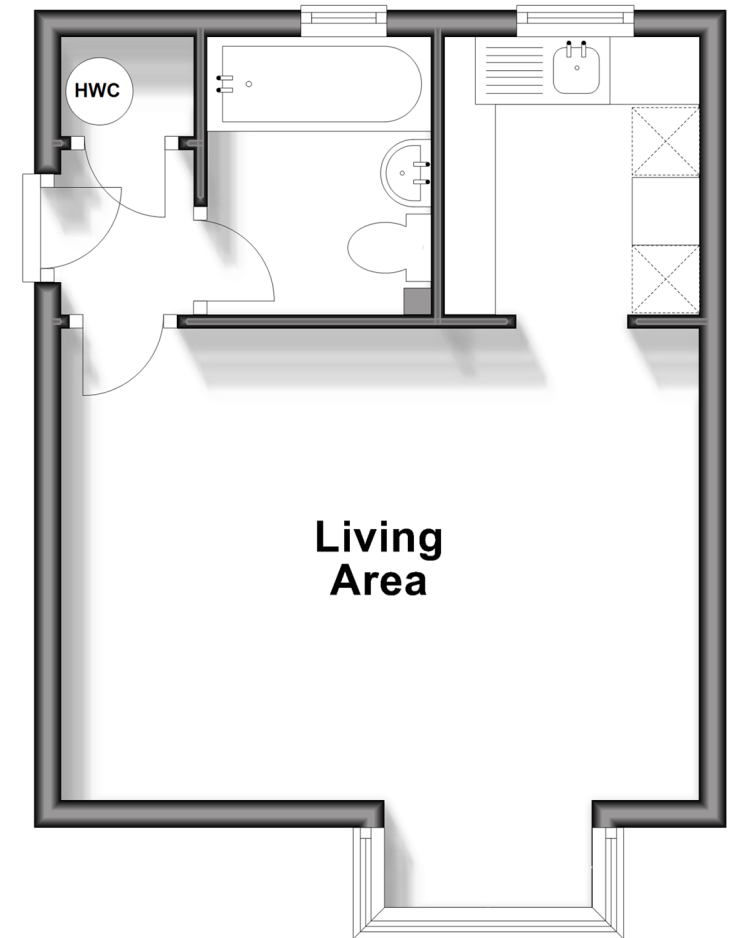
Bathroom

OUTSIDE

Allocated Parking Space

First Floor

Approx. 28.1 sq. metres (302.5 sq. feet)



Call Gravesend - 01474 352417 ■ wardsofkent.co.uk

- Legal advice should be taken to verify fixtures/fittings, planning, alterations and/or lease details
- Appliances & services are untested, dimensions are approximate and floor plans are not to scale
- Through a Homewise Home For Life Plan people aged 60+ can secure this property for up to 59% less, by purchasing a Lifetime Lease.