



**Price**

**£120,000**

**Leasehold**

1x  1x  1x 

**Nelson Court, Glen  
View, Gravesend, Kent,  
DA12**

*Wards*  
Helping you move forwards





## Main features

- Chain free retirement apartment for the over 60s
- Communal gardens, restaurant and lounge
- French doors opening out onto a private patio
- Communal off road parking spaces
- Estate manager available 24 hours a day
- Available furnished by separate negotiation

## Accommodation

### GROUND FLOOR

Entrance Hall

Lounge/Diner: 19'7 x 10'8 (5.97m x 3.25m) plus 6'10 x 6'6 (2.08m x 1.98m)

Kitchen : 9'2 x 7'8 (2.80m x 2.34m)

Bedroom 1: 14'0 x 10'1 at widest point (4.27m x 3.08m)

Bathroom

### OUTSIDE

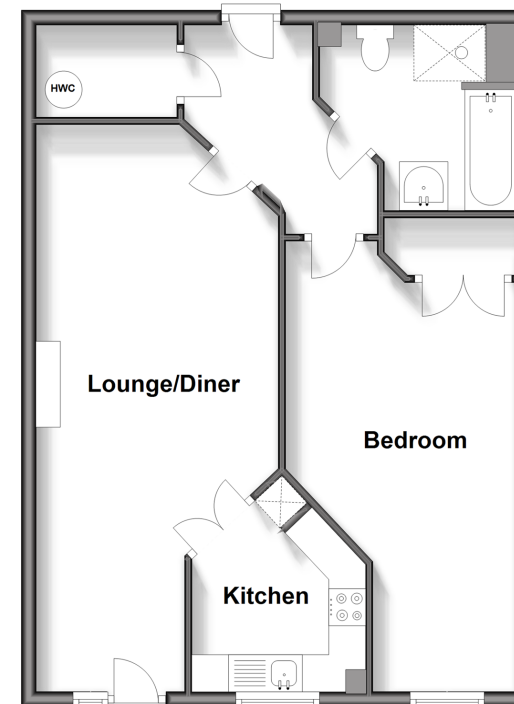
Private Patio

Communal Gardens

Communal Off Road Parking

### Ground Floor

Approx. 58.5 sq. metres (629.6 sq. feet)



**Call Gravesend - 01474 352417 ■ wardsofkent.co.uk**

■ Legal advice should be taken to verify fixtures/fittings, planning, alterations and/or lease details

■ Appliances & services are untested, dimensions are approximate and floor plans are not to scale



11139947/20240315/MM/SB