



Price
£175,000

Leasehold

1x  1x  1x 

**Griffin Court, Black
Eagle Drive, Northfleet,
Gravesend, Kent, DA11**

OVER 60?

Secure this property
for up to **59% less!**

Wards
Helping you move forwards



Main features

- Ideal apartment for first time buyers
- Open plan lounge/diner
- Juliet balcony providing a view to the rear
- Private allocated underground parking
- Communal garden area

Accommodation

THIRD FLOOR

Entrance Hall

Kitchen : 11'8 x 7'4 (3.56m x 2.24m)

Lounge : 15'2 x 12'2 (4.63m x 3.71m)

Juliet Balcony

Bedroom : 10'3 x 9'4 (3.13m x 2.85m)

Bathroom

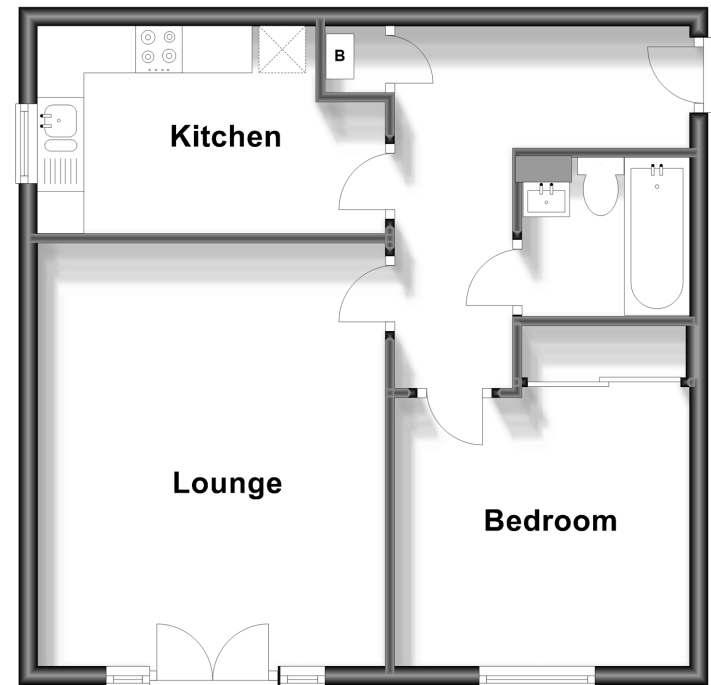
OUTSIDE

1 Allocated Parking Space

Communal Garden

Third Floor

Approx. 47.8 sq. metres (514.1 sq. feet)



Call Gravesend - 01474 352417 ■ wardsofkent.co.uk

■ Legal advice should be taken to verify fixtures/fittings, planning, alterations and/or lease details
 ■ Through a Homewise Home For Life Plan people aged 60+ can secure this property for up to 59% less, by purchasing a Lifetime Lease.

■ Appliances & services are untested, dimensions are approximate and floor plans are not to scale



11139959/20240224/MM/NO