



Price
£260,000

Leasehold

2x  2x  1x 

**Saltwood House, Candy
Dene, Weldon,
Swanscombe, Kent,
DA10**

Wards
Helping you move forwards



Main features

- A beautifully presented ground floor flat in the sought after Ebbsfleet Valley
- Open plan lounge/kitchen/dining area
- Ensuite shower room and family bathroom
- Allocated parking
- Within walking distance of Ebbsfleet International train station

Accommodation

GROUND FLOOR

Entrance Hall

Bedroom 1: 14'5 x 10'1 (4.40m x 3.08m)

Ensuite Shower Room

Bedroom 2: 14'5 x 7'10 (4.40m x 2.39m)

Lounge/Kitchen/Dining Area : 28'8 x 10'10 at widest point (8.74m x 3.30m)

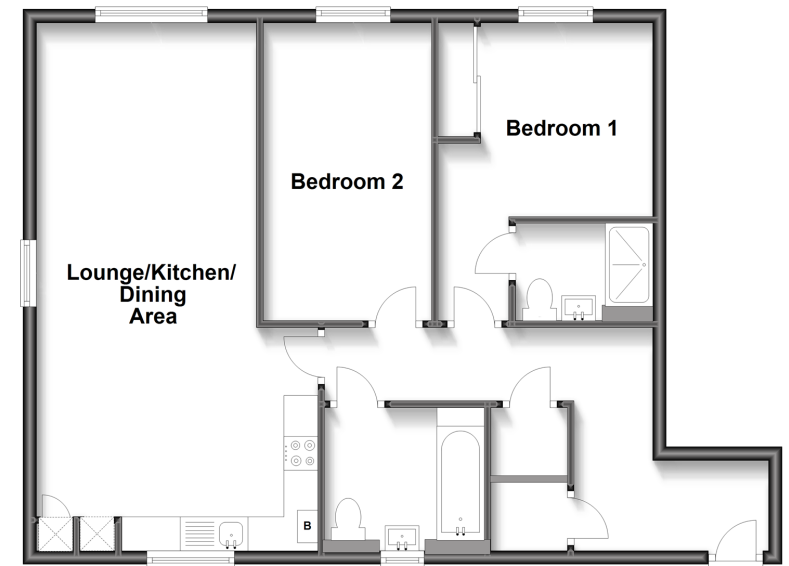
Bathroom : 7'6 x 6'8 (2.29m x 2.03m)

OUTSIDE

Allocated Parking

Ground Floor

Approx. 72.9 sq. metres (785.0 sq. feet)



Call Gravesend - 01474 352417 ■ wardsofkent.co.uk

■ Legal advice should be taken to verify fixtures/fittings, planning, alterations and/or lease details

■ Appliances & services are untested, dimensions are approximate and floor plans are not to scale



11139961/20240312/MM/SB