



OVER 60?

Secure this property
for up to **59% less!**

Price
£385,000

Freehold

3x  1x  2x 

**Grange Road,
Gravesend, Kent, DA11**

Wards
Helping you move forwards



Main features

- Ideal family home
- Extended kitchen area
- Popular Grange Road close to Mayfield Grammar School
- Walking distance of Gravesend town centre and train station
- Sold with no forward chain

Accommodation

GROUND FLOOR

Entrance Hall

Lounge : 14'0 x 13'7 (4.27m x 4.14m)

Dining Room : 12'4 x 10'8 (3.76m x 3.25m)

Kitchen/ Breakfast Room : 18'9 x 8'7 (5.72m x 2.62m)

FIRST FLOOR

Landing

Bedroom 1: 14'2 x 10'5 (4.32m x 3.18m)

Bedroom 2: 12'4 into bay x 12'0 (3.76m x 3.66m)

Bedroom 3: 8'1 x 7'5 (2.47m x 2.26m)

Shower Room

Toilet

OUTSIDE

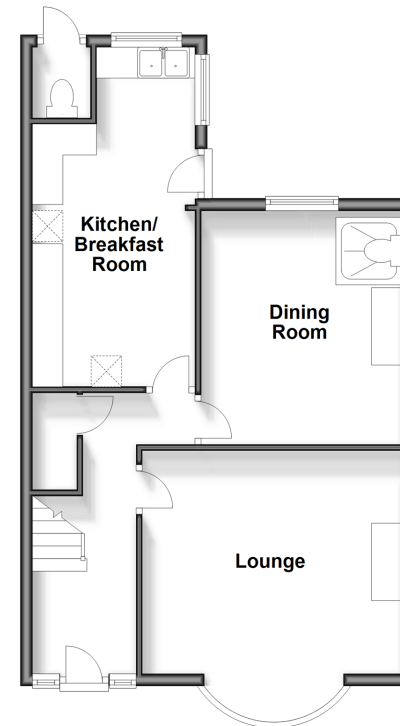
Driveway

Rear Garden

Toilet

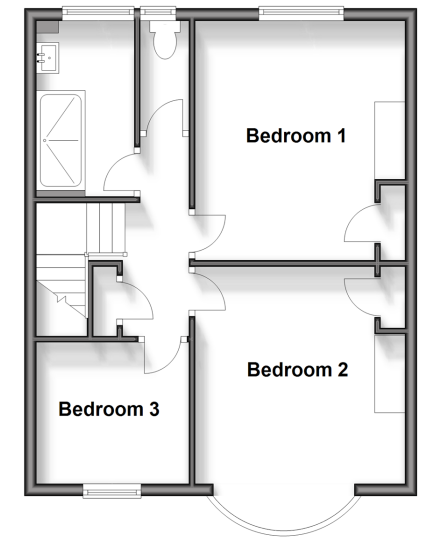
Ground Floor

Approx. 52.8 sq. metres (568.8 sq. feet)



First Floor

Approx. 45.5 sq. metres (490.1 sq. feet)



Call Gravesend - 01474 352417 ■ wardsofkent.co.uk

■ Legal advice should be taken to verify fixtures/fittings, planning, alterations and/or lease details
 ■ Through a Homewise Home For Life Plan people aged 60+ can secure this property for up to 59% less, by purchasing a Lifetime Lease.

■ Appliances & services are untested, dimensions are approximate and floor plans are not to scale



11139978/20240415/MM/NO