



Price

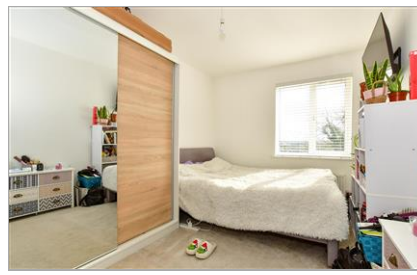
£200,000

Leasehold

2x  2x  1x 

**Griffin Court, Black
Eagle Drive, Northfleet,
Gravesend, Kent, DA11**

Wards
Helping you move forwards



Main features

- A well presented fourth floor flat with lift access
- En-suite shower room to the main bedroom
- Secure underground allocated parking
- Walking distance to Ebbsfleet International train station
- Offered for sale with no forward chain

Accommodation

FOURTH FLOOR

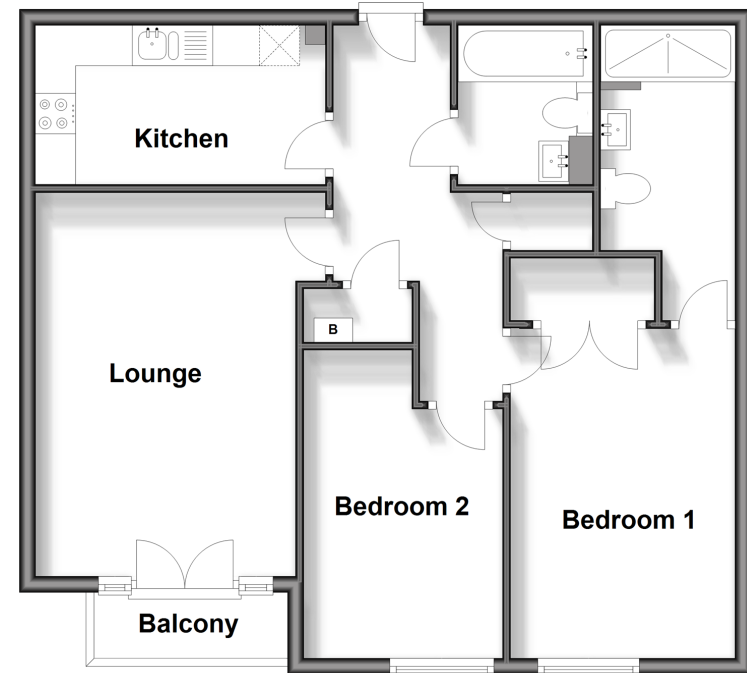
Entrance Hall
 Kitchen : 12'5 x 6'6 (3.79m x 1.98m)
 Lounge : 15'1 x 12'3 (4.60m x 3.74m)
 Bedroom 2: 11'9 x 8'5 (3.58m x 2.57m)
 Bedroom 1: 13'6 x 9'7 (4.12m x 2.92m)
 En-suite Shower Room
 Bathroom

OUTSIDE

1 Allocated Parking Space
 Communal Garden

Fourth Floor

Approx. 64.8 sq. metres (697.1 sq. feet)



Call Gravesend - 01474 352417 ■ wardsofkent.co.uk

■ Legal advice should be taken to verify fixtures/fittings, planning, alterations and/or lease details

■ Appliances & services are untested, dimensions are approximate and floor plans are not to scale



11139986/20240321/MM/SB