



Price
£700,000

Freehold

3x  3x  3x 

**Chalky Bank, Gravesend,
Kent, DA11**

OVER 60?

Secure this property
for up to **59% less!**

Wards
Helping you move forwards



Main features

- Simply stunning detached home
- Versatile living space that can be used for a 4th bedroom with separate access
- Open plan lounge/dining area
- Gorgeous views across Mid-Kent golf course
- Downstairs shower room and upstairs bathroom

Accommodation

GROUND FLOOR

Entrance Hall
Cloakroom
Shower Room
Utility Room
Kitchen/Family Room : 31'4 x 11'8 (9.56m x 3.56m)
Lounge : 18'1 x 10'9 (5.52m x 3.28m)
Dining Room : 15'7 x 8'8 (4.75m x 2.64m)

FIRST FLOOR

Landing
Bedroom 1: 13'2 x 9'9 (4.02m x 2.97m)
Dressing Room
En-suite Shower Room
Bedroom 2: 9'8 x 8'9 (2.95m x 2.67m)
Bedroom 3: 9'2 x 7'9 (2.80m x 2.36m)
Toilet
Bathroom

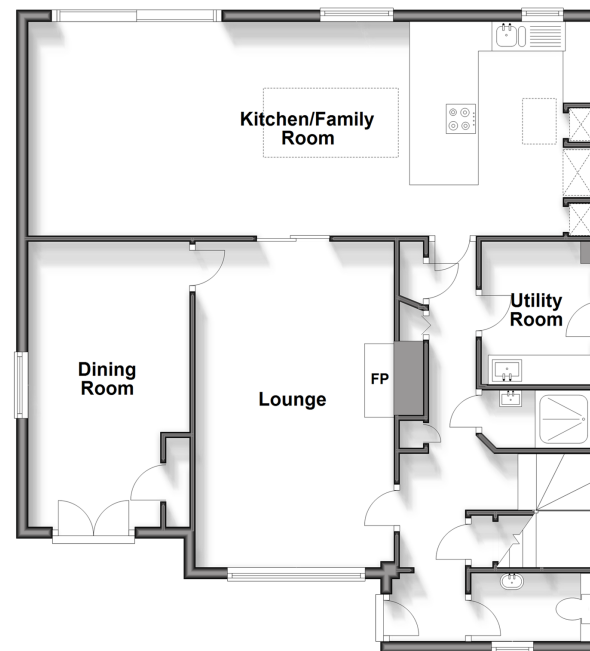
OUTSIDE

Front Garden
Driveway
Rear Garden

Call Gravesend - 01474 352417 ■ wardsof Kent.co.uk

- Legal advice should be taken to verify fixtures/fittings, planning, alterations and/or lease details
- Appliances & services are untested, dimensions are approximate and floor plans are not to scale
- Through a Homewise Home For Life Plan people aged 60+ can secure this property for up to 59% less, by purchasing a Lifetime Lease.

Ground Floor
Approx. 91.4 sq. metres (983.9 sq. feet)



First Floor
Approx. 51.3 sq. metres (552.1 sq. feet)

