



OVER 60?

Secure this property
for up to **59% less!**

Price

£270,000

Freehold

3x  1x  1x 

**Suffolk Road,
Gravesend, Kent, DA12**

Wards
Helping you move forwards



Main features

- Ideal for first time buyers or buy to let investors
- Downstairs bathroom
- Spacious open plan lounge/dining room
- Within walking distance of Gravesend train station with the high speed service into London
- Close to local schools

Accommodation

SPLIT LEVEL GROUND FLOOR

Lounge/Dining Room : 24'2 into bay x 13'3 (7.37m x 4.04m)

Kitchen : 10'7 x 6'9 (3.23m x 2.06m)

Bathroom

SPLIT LEVEL FIRST FLOOR

Landing

Bedroom 1: 12'3 x 11'3 (3.74m x 3.43m)

Bedroom 2: 12'5 x 7'1 (3.79m x 2.16m)

Bedroom 3: 10'7 x 6'10 (3.23m x 2.08m)

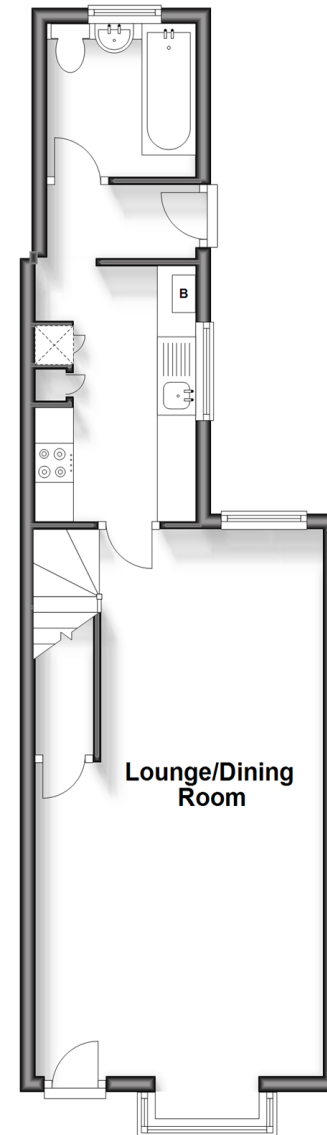
OUTSIDE

Front Garden

Rear Garden

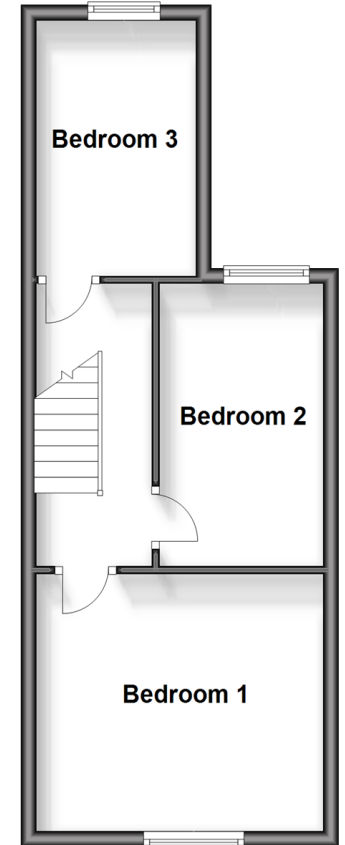
Split Level Ground Floor

Approx. 39.6 sq. metres (426.3 sq. feet)



Split Level First Floor

Approx. 33.3 sq. metres (357.9 sq. feet)



Call Gravesend - 01474 352417 ■ wardsofkent.co.uk

- Legal advice should be taken to verify fixtures/fittings, planning, alterations and/or lease details
- Appliances & services are untested, dimensions are approximate and floor plans are not to scale
- Through a Homewise Home For Life Plan people aged 60+ can secure this property for up to 59% less, by purchasing a Lifetime Lease.



11139994/20240308/MM/NO