



OVER 60?

Secure this property
for up to **59% less!**

Price

£375,000

Freehold

3x  1x  3x 

**Oaklands Road,
Northfleet, Gravesend,
Kent, DA11**

Wards
Helping you move forwards



Main features

- A beautifully presented family home in a sought after location
- Lounge, dining area and family area
- Driveway to the front and garage en-bloc
- Handy outbuilding ideal for a home office
- Offered for sale with no forward chain

Accommodation

GROUND FLOOR

Entrance Hall

Lounge: 15'8 x 11'3 (4.78m x 3.43m)

Family Area: 9'0 x 8'7 (2.75m x 2.62m)

Dining Area: 10'2 x 7'8 (3.10m x 2.34m)

Utility Room : 7'3 x 6'4 (2.21m x 1.93m)

Conservatory Area : 9'9 x 9'3 (2.97m x 2.82m)

Kitchen : 10'5 x 7'8 (3.18m x 2.34m)

FIRST FLOOR

Landing

Bedroom 1: 12'11 x 11'7 (3.94m x 3.53m)

Bedroom 2: 9'7 x 9'1 (2.92m x 2.77m)

Bedroom 3: 7'10 x 6'9 (2.39m x 2.06m)

Bathroom

SECOND FLOOR

Loft Area : 17'8 x 10'0 (5.39m x 3.05m)

OUTSIDE

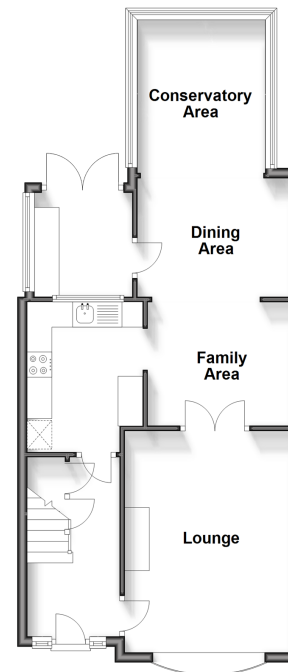
Driveway

Rear Garden

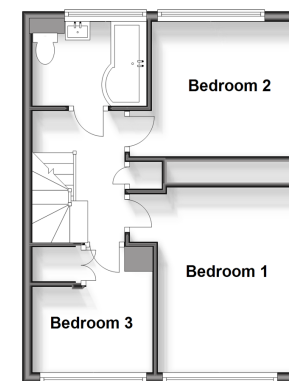
Outbuilding : 10'3 x 8'4 (3.13m x 2.54m)

Garage En-Bloc

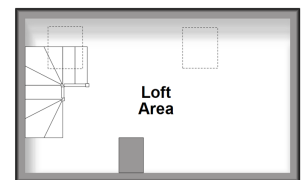
Ground Floor
Approx. 55.8 sq. metres (600.5 sq. feet)



First Floor
Approx. 37.3 sq. metres (401.1 sq. feet)



Second Floor
Approx. 16.3 sq. metres (175.7 sq. feet)



Call Gravesend - 01474 352417 ■ wardsofkent.co.uk

■ Legal advice should be taken to verify fixtures/fittings, planning, alterations and/or lease details
■ Through a Homewise Home For Life Plan people aged 60+ can secure this property for up to 59% less, by purchasing a Lifetime Lease.

■ Appliances & services are untested, dimensions are approximate and floor plans are not to scale



11140006/20240323/MM/SB