



Price
£300,000

Freehold

3x  1x  1x 

**Ruffets Wood,
Gravesend, Kent, DA12**

OVER 60?

Secure this property
for up to **59% less!**

Wards
Helping you move forwards



Main features

- A lovely mid terraced home ideal for first time buyers
- Garage en-bloc
- Low maintenance rear garden
- Within walking distance to shops and schools
- A short drive to A2/M2 motorway networks

Accommodation

GROUND FLOOR

Kitchen : 10'5 x 8'8 (3.18m x 2.64m)
 Entrance Hall
 Lounge/Diner: 14'1 x 14'1 (4.30m x 4.30m)

FIRST FLOOR

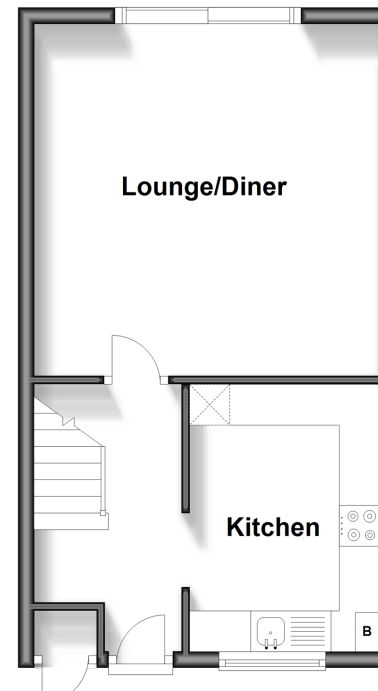
Landing
 Bedroom 1: 14'1 x 7'8 (4.30m x 2.34m)
 Bedroom 2: 9'6 x 8'8 (2.90m x 2.64m)
 Bedroom 3: 6'5 x 5'9 (1.96m x 1.75m)
 Bathroom

OUTSIDE

Front Garden
 Rear Garden
 Garage En Bloc

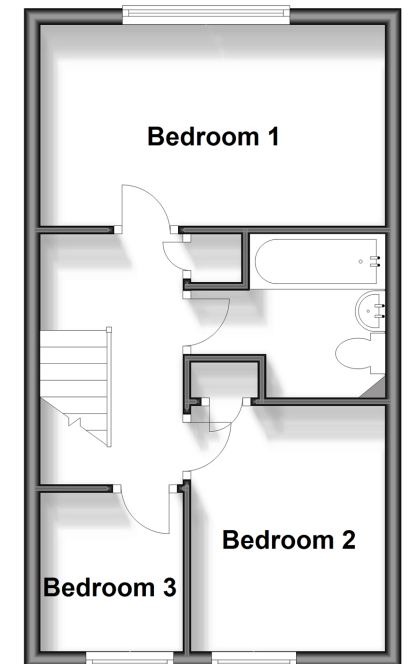
Ground Floor

Approx. 33.1 sq. metres (356.3 sq. feet)



First Floor

Approx. 33.1 sq. metres (356.3 sq. feet)



Call Gravesend - 01474 352417 ■ wardsofkent.co.uk

■ Legal advice should be taken to verify fixtures/fittings, planning, alterations and/or lease details
 ■ Through a Homewise Home For Life Plan people aged 60+ can secure this property for up to 59% less, by purchasing a Lifetime Lease.

■ Appliances & services are untested, dimensions are approximate and floor plans are not to scale



11140026/20240508/SB/SB