

OVER 60?

Secure this property
for up to **59% less!**

Price
£300,000

Freehold

3x  1x  1x 

**Beresford Road,
Northfleet, Gravesend,
Kent, DA11**

Wards
Helping you move forwards



Main features

- Ideal for first time buyers
- Open plan lounge
- Downstairs bathroom
- Walking distance to shops and schools
- Offered for sale with no forward chain

Accommodation

SPLIT LEVEL GROUND FLOOR

Lounge : 24'5 into bay x 13'0 (7.45m x 3.97m)

Kitchen : 10'5 x 8'11 (3.18m x 2.72m)

Bathroom

SPLIT LEVEL FIRST FLOOR

Landing

Bedroom 1: 13'0 x 12'7 into bay (3.97m x 3.84m)

Bedroom 2: 11'11 x 7'7 (3.63m x 2.31m)

Bedroom 3: 10'2 x 8'2 (3.10m x 2.49m)

OUTSIDE

Front Garden

Rear Garden

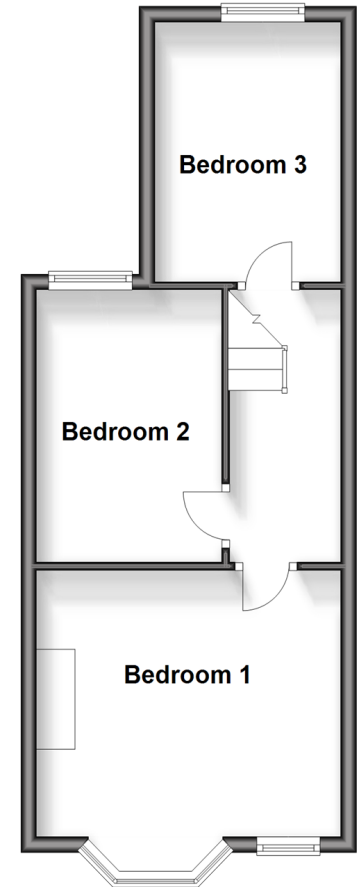
Split Level Ground Floor

Approx. 41.9 sq. metres (450.9 sq. feet)



Split Level First Floor

Approx. 35.3 sq. metres (379.7 sq. feet)



Call Gravesend - 01474 352417 ■ wardsofkent.co.uk

- Legal advice should be taken to verify fixtures/fittings, planning, alterations and/or lease details
- Appliances & services are untested, dimensions are approximate and floor plans are not to scale
- Through a Homewise Home For Life Plan people aged 60+ can secure this property for up to 59% less, by purchasing a Lifetime Lease.



11140027/20240420/MM/NO